

## Product datasheet for **AM08181PU-N**

### Influenza A (Nucleoprotein) Mouse Monoclonal Antibody [Clone ID: FluA-NP 2C9]

#### Product data:

Product Type:	Primary Antibodies
Clone Name:	FluA-NP 2C9
Applications:	ELISA, WB
Recommended Dilution:	<b>ELISA.</b> <b>Western Blot:</b> 1-5 µg/ml. <b>Immunostaining:</b> 1-5 µg/ml.
Reactivity:	Influenza A Virus
Host:	Mouse
Isotype:	IgG2a
Clonality:	Monoclonal
Immunogen:	Recombinant influenza virus type A Nucleoprotein (NP).
Specificity:	This antibody has been shown to specifically recognize type A influenza virus NP in virus infected cell culture and patients' samples.
Formulation:	100 mM Borate buffered saline, pH 8.2. No preservatives or amine-containing buffer salts added. State: Purified State: Liquid purified Ig fraction.
Concentration:	lot specific
Conjugation:	Unconjugated
Storage:	Store the antibody undiluted at 2-8°C for one month or (in aliquots) at -20°C for longer. Avoid repeated freezing and thawing.
Stability:	Shelf life: one year from despatch.



[View online »](#)

**Background:**

The nucleoprotein (NP) of Influenza virus encapsulates the negative strand of the viral RNA and is essential for replicative transcription. It may also be involved in other essential functions throughout the virus life cycle. As well as binding ssRNA, NP is able to self associate to form large oligomeric complexes. NP is able to interact with a variety of other macromolecules of both viral and cellular origins. It binds the PB1 and PB2 subunits of the polymerase and the matrix protein M1. NP has also been shown to interact with at least four cellular polypeptide families: nuclear import receptors of the importin class, filamentous (F) actin, the nuclear export receptor CRM1 and a DEAD box helicase BAT1/UAP56 (Portela et al 2002).

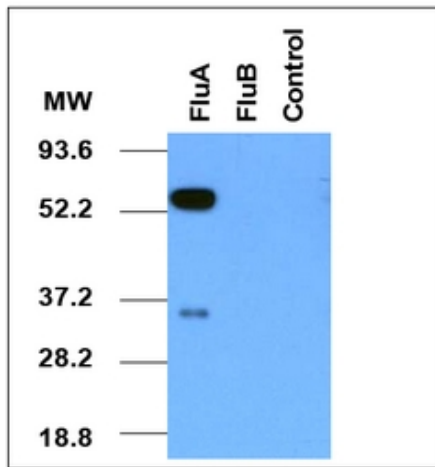
**Synonyms:**

Influenza A Virus, Seasonal Flu

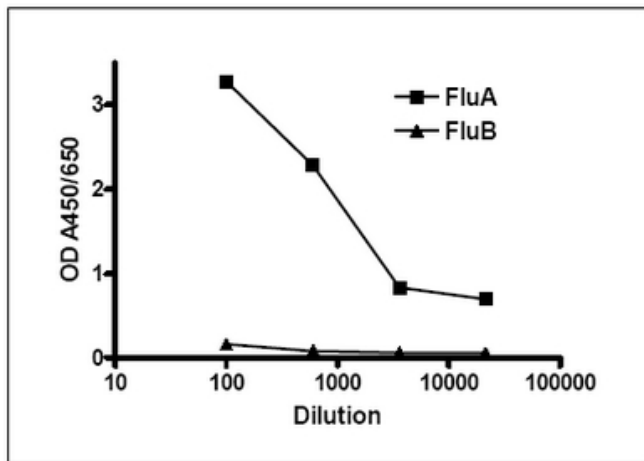
**Note:**

To insure lot-to-lot consistency, each batch of product is tested by ELISA and/or Western Blot to conform to the characteristics of a standard reference reagent.

**Product images:**



Western Blot: Vero cells were infected with a strain of Influenza A (H1N1), a strain of Influenza B, and non-infected cells as Control. 24 hours after infection, total cell lysates were separated in 10% SDS-PAGE and blotted. The blot was probed with 1 g/mL



Sandwich ELISA for Detecting Influenza A Infection. ELISA plate was coated with 2-4 g/mL of Capture antibody Cat.No AM08181PU-N at 4C overnight. After blocking with 3% BSA-PBS, the serially diluted cell lysates from Influenza A or influenza B infected vero