

Product datasheet for **AM08160PU-S**

LOC105369261 Mouse Monoclonal Antibody [Clone ID: DF-T1]

Product data:

Product Type:	Primary Antibodies
Clone Name:	DF-T1
Applications:	FC, IF, IHC, IP, WB
Recommended Dilution:	ELISA (Use Free BSA Antibody for coating). Flow Cytometry: 0.5-1 µg/10 ⁶ cells. Immunofluorescence: 1-2 µ/ml. Western Blot: 0.5-1 µg/ml. Immunoprecipitation: 1-2 µg/500 µg protein lysate. Immunohistochemistry on Frozen and Formalin-Fixed Paraffin Sections: 0.5-1 µg/ml for 30 minutes at RT. Staining of formalin-fixed tissues requires boiling tissue sections in 10mM citrate buffer, pH 6.0, for 10-20 min followed by cooling at RT for 20 minutes. Positive Control: Paracortex in a tonsil or a reactive lymph node.
Reactivity:	Human
Host:	Mouse
Isotype:	IgG1
Clonality:	Monoclonal
Immunogen:	Myeloblastic KG1 cells.
Specificity:	This Monoclonal antibody recognizes a cell surface glycoprotein of 95/115/135kDa (depending upon the extent of glycosylation), identified as CD43 [Workshop IV]. 70-90% of T-cell lymphomas and from 22-37% of B-cell lymphomas express CD43. No reactivity has been observed with reactive B-cells. So a B-lineage population that co-expresses CD43 is highly likely to be a malignant lymphoma, especially a low-grade lymphoma, rather than a reactive B-cell population. When CD43 antibody is used in combination with anti-CD20, effective immunophenotyping of the lymphomas in formalin-fixed tissues can be obtained. Co-staining of a lymphoid infiltrate with anti-CD20 and anti-CD43 argues against a reactive process and favors a diagnosis of lymphoma. Cellular Localization: Cell Surface.



[View online »](#)

Formulation: 10mM PBS
State: Purified
State: Liquid purified IgG fraction from Bioreactor Concentrate
Stabilizer: 0.05% BSA
Preservative: 0.05% Sodium Azide

Concentration: lot specific

Purification: Protein A/G Chromatography

Conjugation: Unconjugated

Storage: Store undiluted at 2-8°C.

Stability: Shelf life: one year from despatch.

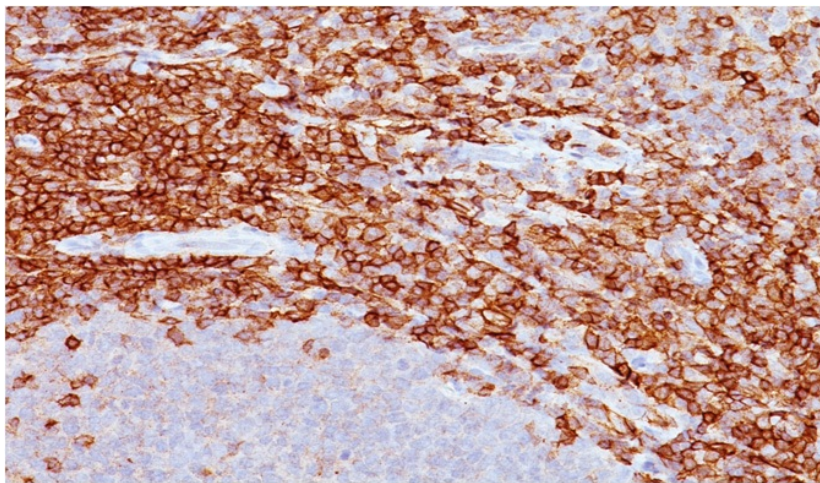
Predicted Protein Size: 95, 115, or 135 kDa

Database Link: [Entrez Gene 105369261 Human P16150](#)

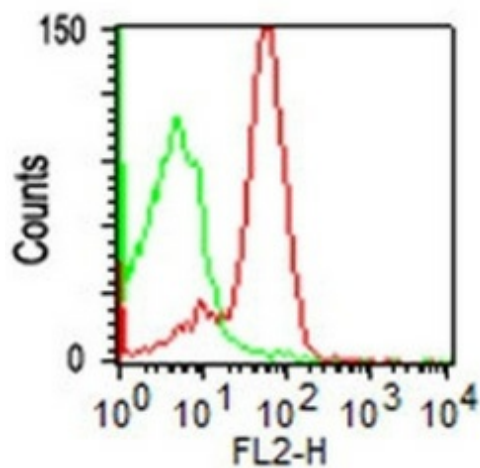
Background: CD43 is a cell surface glycoprotein which is expressed on all thymocytes and T-cells. CD43 is involved in activation of T cells, B cells, NK cells, and monocytes. CD43, which is also known as leukosialin, galactoglycoprotein and sialophorin. CD43 is a sialomucin which like many mucins can have both adhesive and anti-adhesive functions. Expression of CD43 is found on most leukocytes except resting B lymphocytes. Proteolytic processing upon activation decreases surface expression. CD43 is involved in activation of T cells, B cells, NK cells, and monocytes. The counter-receptor for CD43 is CD169/SIGLEC-1, which is expressed on macrophages.

Synonyms: Leukocyte sialoglycoprotein, Sialophorin, Galactoglycoprotein, SPN

Product images:



Formalin-Paraffin Human Spleen stained with Cp43 Antibody (Clone DF-T1).



CD43 expression by lymphocyte gated population of PBMC: PBMC were stained either with purified CD43 Antibody (Clone DF-T1) or isotype control.