

Product datasheet for **AM08142FC-N**

VSIG1 Mouse Monoclonal Antibody [Clone ID: CT1]

Product data:

Product Type:	Primary Antibodies
Clone Name:	CT1
Applications:	FC
Recommended Dilution:	Flow Cytometry: < / = 1 µg/10e6 cells. Identification and enumeration of ChT1+ cells. (Ref.4)
Reactivity:	Chicken
Host:	Mouse
Isotype:	IgG1
Clonality:	Monoclonal
Immunogen:	Chicken thymocytes.
Specificity:	This antibody is specific to ChT1 antigen (Mr 63/104 kDa) on Chicken thymocyte. (Ref.1) CT1 can block T cell differentiation in vitro, in thymic organ cultures and in thymocyte precursors cultured on stromal cell monolayers. (Ref.4) CT1 also recognizes quail cortical thymocytes. (Ref.1)
Formulation:	PBS containing 0.09% Sodium Azide as preservative. Label: FITC State: Liquid purified Ig fraction. Label: Fluorescein Isothiocyanate Isomer 1
Concentration:	lot specific
Conjugation:	FITC
Storage:	Store the antibody undiluted at 2-8°C for one month or in (aliquots) at -20°C for longer. This product is photosensitive and should be protected from light. Avoid repeated freezing and thawing.
Stability:	Shelf life: one year from despatch.
Gene Name:	V-set and immunoglobulin domain containing 1
Database Link:	Entrez Gene 414795 Chicken Q9PWR4



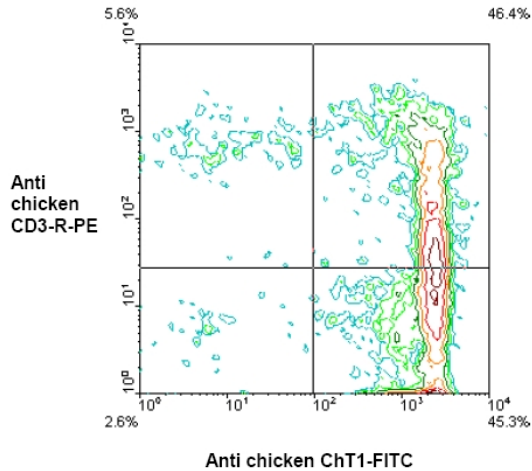
[View online »](#)

Background:

ChT1, a member of the Ig superfamily with one V-like and one C2-like domain, is a T cell antigen that is expressed on the surface of embryonic thymocytes (day 10). In young chickens, about 90% of the thymocytes as well as a subpopulation of peripheral lymphocytes (which represent recent thymic emigrants) are ChT1 positive. (Ref.1-4) Expression in the periphery declines with age and, in correlation with partial thymectomy, indicates that ChT1 can be used as an accurate marker for studying thymic function. (Ref.3)

Synonyms:

Cell surface A33 antigen, Glycoprotein A34, GPA34

Product images:

Immunofluorescent Staining: Chicken thymocytes were double stained with Mouse anti-Chicken CD3-PE and Mouse anti-Chicken ChT1-FITC. Analysis was performed on a FACScan (TM) flow cytometer (BDB, San Jose, CA). Amount Used: < / = 1 ug/10e6 cells.