

Product datasheet for **AM08135PU-N**

Bu-1b Mouse Monoclonal Antibody [Clone ID: 5-11G2]

Product data:

Product Type:	Primary Antibodies
Clone Name:	5-11G2
Applications:	FC, IHC, IP
Recommended Dilution:	Flow Cytometry: $< / = 1 \mu\text{g}/10\text{e}6$ cells. (Ref.1) Immunoprecipitation. (Ref.1) Immunohistochemistry on Frozen Sections. (Ref.3)
Reactivity:	Chicken
Host:	Mouse
Isotype:	IgG1
Clonality:	Monoclonal
Immunogen:	Bursal cells from 2- to 5-week-old CHA (Bu-1b) strain Chickens.
Specificity:	This antibody recognizes Chicken Bu-1b alloantigen (Mr. 70 kDa). It reacts with lymphoid cells from CHA and H.B14Ab strains but does not react with cells from H.B14Aa.
Formulation:	100 mM Borate Buffered Saline, pH 8.2. No preservatives or amine-containing buffer salts added. State: Purified State: Liquid purified Ig fraction.
Concentration:	lot specific
Conjugation:	Unconjugated
Storage:	Store the antibody undiluted at 2-8°C for one month or (in aliquots) at -20°C for longer. Avoid repeated freezing and thawing.
Stability:	Shelf life: one year from despatch.
Database Link:	Q90747



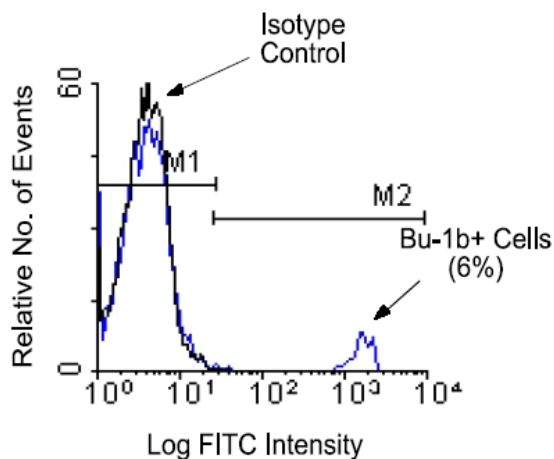
[View online »](#)

Background:

Bu1b is expressed on chicken B cells throughout most of their development, as well as on some non lymphoid cells. It has no recognizable similarity to known mammalian molecules and therefore represents a unique B cell marker. Its presence in chickens may be related to differences in the properties of B cell development between chickens and mammalian species. Chicken Bu1b, a product of the Bu1b allele, is expressed on the cell surface as a disulfide linked homodimer. In 10 week old H.B15 and H.B2 chickens, Bu1 is found on 85 to 90% of bursal cells, 2 to 8% of thymocytes, 15 to 27% of spleen cells, and 2 to 18% of peripheral blood cells. It is also expressed on subsets of macrophages and monocytes, but not on granulocytes, erythrocytes or thrombocytes. In chickens heterozygous for the Bu1 alleles (Bu1 a/b), Bu1a does not exhibit allelic exclusion.

Synonyms:

B6.2, chicken B-cell marker

Product images:

Immunofluorescent Staining: Chicken peripheral blood mononuclear cells were first incubated with purified Mouse anti-Chicken Bu-1b and then counter-stained with Goat anti-Mouse IgG-FITC. Small lymphocytes were then gated using light scatter criterias and a