

## Product datasheet for **AM08134PU-N**

### LOC396098 Mouse Monoclonal Antibody [Clone ID: 21-1A4]

#### Product data:

Product Type:	Primary Antibodies
Clone Name:	21-1A4
Applications:	FC, IHC, IP
Recommended Dilution:	<b>Flow Cytometry:</b> < / = 1 µg/10e6 cells. (Ref.1) <b>Immunoprecipitation.</b> (Ref.1) <b>Immunohistochemistry on Frozen Sections.</b> (Ref.3)
Reactivity:	Chicken
Host:	Mouse
Isotype:	IgG1
Clonality:	Monoclonal
Immunogen:	Bursal cells from one-day-old H.B15 (Bu-1a/b) strain chickens.
Specificity:	This antibody recognizes Chicken Bu-1a alloantigen (Mr. 70 kDa). It does not react with cells from CHA and H.B15 strains by Immunofluorescence.
Formulation:	100 mM Borate Buffered Saline, pH 8.2. No preservatives or amine-containing buffer salts added. State: Purified State: Liquid purified Ig fraction.
Concentration:	lot specific
Conjugation:	Unconjugated
Storage:	Store the antibody undiluted at 2-8°C for one month or (in aliquots) at -20°C for longer. Avoid repeated freezing and thawing.
Stability:	Shelf life: one year from despatch.
Gene Name:	B6.1
Database Link:	<a href="#">Entrez Gene 396098 Chicken Q90746</a>



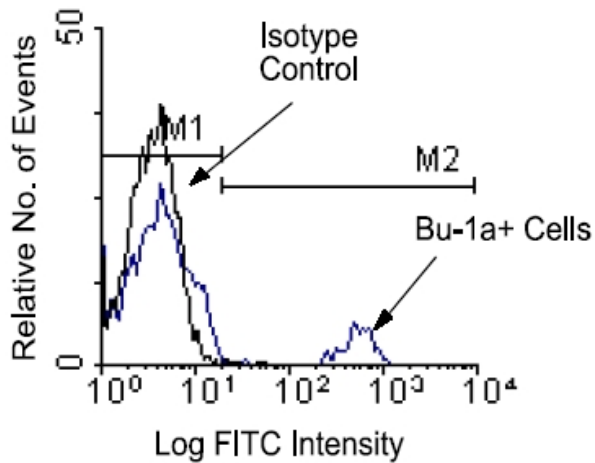
[View online »](#)

**Background:**

Chicken Bu-1a, a product of the Bu-1a allele, is expressed on the cell surface as a disulfide-linked homodimer. In 10-week-old H.B15 and H.B2 chickens, Bu-1 is found on 85-90% of bursal cells, 2-8% of thymocytes, 15-27% of spleen cells, and 2-18% of peripheral blood cells. It is also expressed on subsets of macrophages and monocytes, but not on granulocytes, erythrocytes or thrombocytes. In Chickens heterozygous for the Bu-1 alleles (Bu-1a/b), Bu-1a does not exhibit allelic exclusion.

**Synonyms:**

B-Cell Marker

**Product images:**

Immunofluorescent Staining: Chicken peripheral blood mononuclear cells were first incubated with purified Mouse anti-Chicken Bu-1a and then counter-stained with Goat anti-Mouse IgG-FITC. Small lymphocytes were then gated using light scatter criterias and analyzed on a FACScan (TM) flow cytometer (BDIS, San Jose, CA). Amount Used: 1 ug/10e6 cells.