

## Product datasheet for **AM08132FC-N**

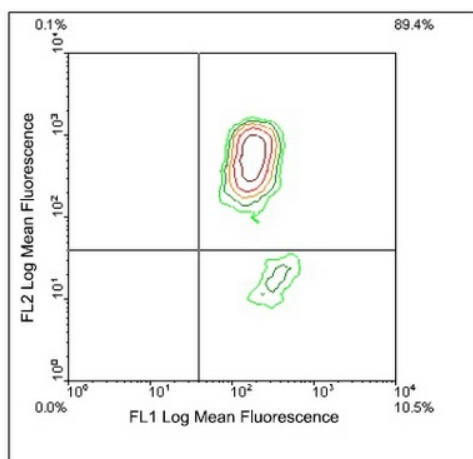
### Beta-2-microglobulin Mouse Monoclonal Antibody [Clone ID: F21-21]

#### Product data:

Product Type:	Primary Antibodies
Clone Name:	F21-21
Applications:	FC
Recommended Dilution:	<b>Flow Cytometry:</b> < / = 1 µg/10e6 cells. (Ref.1-3)
Reactivity:	Chicken
Host:	Mouse
Isotype:	IgG1
Clonality:	Monoclonal
Specificity:	This antibody recognizes the beta2-Microglobulin subunit (Mr~ 14 kDa) of avian MHC Class I molecules. It also reacts with turkey beta2-Microglobulin.
Formulation:	PBS containing 0.09% Sodium Azide as preservative. Label: FITC State: Liquid purified Ig fraction. Label: Fluorescein Isothiocyanate Isomer 1
Concentration:	lot specific
Conjugation:	FITC
Storage:	Store the antibody undiluted at 2-8°C for one month or in (aliquots) at -20°C for longer. This product is photosensitive and should be protected from light. Avoid repeated freezing and thawing.
Stability:	Shelf life: one year from despatch.
Database Link:	<a href="#">P21611</a>
Background:	Beta 2 Microglobulin non-covalently associates with the 44 kDa alpha chain to form the HLA Class I antigen complex. Human beta 2 Microglobulin associated with HLA Class I antigens are expressed on many types of cells including lymphocytes, thymocytes, monocytes, granulocytes, platelets, endothelial cells, and epithelial cells. It is absent on erythrocytes.
Synonyms:	B2M, Beta-2 microglobulin, Beta 2 microglobulin



[View online »](#)

**Product images:**

Immunofluorescent Staining: Chicken peripheral blood mononuclear cells were double-stained with Mouse anti-Chicken Beta-2-Microglobulin-FITC and Mouse anti-Chicken CD3-PE (Cat# [AM08114FC-N]). Small lymphocytes were then gated and analyzed on a FACScan (TM) fl