

Product datasheet for **AM08130FC-N**

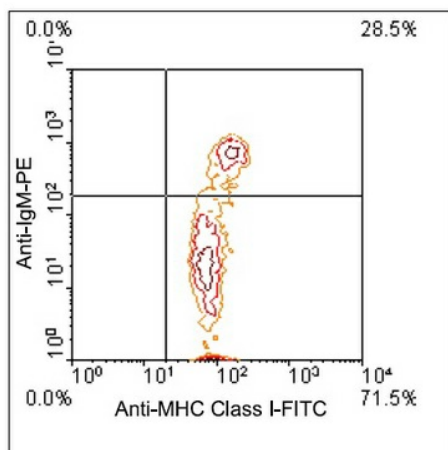
MHC Class I Mouse Monoclonal Antibody [Clone ID: F21-2]

Product data:

Product Type:	Primary Antibodies
Clone Name:	F21-2
Applications:	FC
Recommended Dilution:	Flow Cytometry: < / = 1 µg/10e6 cells. (Ref.1-4)
Reactivity:	Chicken
Host:	Mouse
Isotype:	IgG1
Clonality:	Monoclonal
Specificity:	This antibody recognizes a monomorphic epitope on avian MHC Class I molecules (Mr ~ 68 kDa). It also reacts with Turkey MHC Class I.
Formulation:	PBS containing 0.09% Sodium Azide as preservative. Label: FITC State: Liquid purified Ig fraction. Label: Fluorescein Isothiocyanate Isomer 1
Concentration:	lot specific
Conjugation:	FITC
Storage:	Store the antibody undiluted at 2-8°C for one month or in (aliquots) at -20°C for longer. This product is photosensitive and should be protected from light. Avoid repeated freezing and thawing.
Stability:	Shelf life: one year from despatch.
Background:	MHC Class I molecules play a central role in the immune system by presenting peptides derived from the endoplasmic reticulum lumen. MHC class I antigens are heterodimers consisting of one alpha chain (44kDa) with beta 2 microglobulin (11.5 kDa). The antigen is expressed by all somatic cells at varying levels. MHC Class I molecules are expressed on most nucleated cells where they present endogenously synthesized antigenic peptides to CD8+ T lymphocytes, which are usually cytotoxic T cells. (Ref.1-3) Fibroblasts or neurons however only show a low level of antigen.
Synonyms:	MHC Class 1, HLA Class 1



[View online »](#)

Product images:

Immunofluorescent Staining: Chicken peripheral blood mononuclear cells were double-stained with Mouse anti-Chicken MHC Class I-FITC and Mouse anti-Chicken IgM-PE. Small lymphocytes were then gated and analyzed on a FACScan (TM) flow cytometer (BDIS, San Jos