

Product datasheet for **AM08124FC-N**

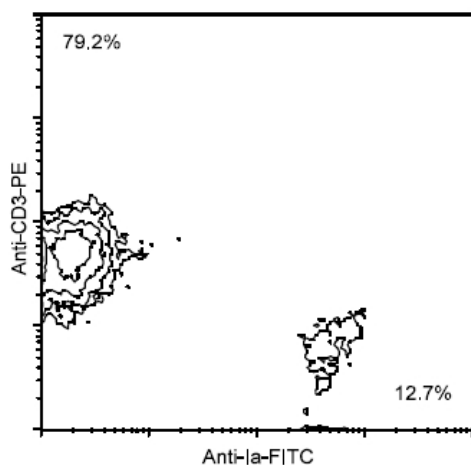
MHC Class II (I-A) Mouse Monoclonal Antibody [Clone ID: Cla-I]

Product data:

Product Type:	Primary Antibodies
Clone Name:	Cla-I
Applications:	FC
Recommended Dilution:	Flow Cytometry: < / = 1 µg/10e6 cells. Identification and enumeration of Ia+ cells. (Ref.1)
Reactivity:	Chicken
Host:	Mouse
Isotype:	IgM
Clonality:	Monoclonal
Specificity:	This antibody recognizes a 65 kDa glycoprotein consisting of a 32 kDa alpha-chain non-covalently bound to a 27 kDa beta-chain. The molecule recognized by this antibody is similar in structure to the murine Ia antigens and human DR antigens.
Formulation:	PBS containing 0.09% Sodium Azide as preservative. Label: FITC State: Liquid purified Ig fraction. Label: Fluorescein Isothiocyanate Isomer 1
Concentration:	lot specific
Conjugation:	FITC
Storage:	Store the antibody undiluted at 2-8°C for one month or in (aliquots) at -20°C for longer. This product is photosensitive and should be protected from light. Avoid repeated freezing and thawing.
Stability:	Shelf life: one year from despatch.
Background:	The Chicken Ia antigen is expressed on B cells, a subpopulation of the monocyte/macrophage lineage of cells, and mitogen-activated T cells. (Ref.1)



[View online »](#)

Product images:

Immunofluorescent Staining: Chicken peripheral blood mononuclear cells were double-stained with Mouse anti-Chicken Ia-FITC and Mouse anti-Chicken CD3-PE. Small lymphocytes were then gated and analyzed on a FACScan (TM) flow cytometer (BDIS, San Jose, CA). A