

## Product datasheet for **AM08123FC-N**

### CD8B Mouse Monoclonal Antibody [Clone ID: EP42]

#### Product data:

Product Type:	Primary Antibodies
Clone Name:	EP42
Applications:	FC
Recommended Dilution:	<b>Flow Cytometry:</b> < / = 1 µg/10e6 cells. (Ref.2)
Reactivity:	Chicken
Host:	Mouse
Isotype:	IgG2a
Clonality:	Monoclonal
Specificity:	This antibody recognizes beta chain of Chicken CD8 (Mr. 34 kDa).
Formulation:	PBS containing 0.09% Sodium Azide as preservative. Label: FITC State: Liquid purified Ig fraction. Label: Fluorescein Isothiocyanate Isomer 1
Concentration:	lot specific
Conjugation:	FITC
Storage:	Store the antibody undiluted at 2-8°C for one month or in (aliquots) at -20°C for longer. This product is photosensitive and should be protected from light. Avoid repeated freezing and thawing.
Stability:	Shelf life: one year from despatch.
Gene Name:	CD8b molecule
Database Link:	<a href="#">Entrez Gene 396175 Chicken Q90769</a>



[View online »](#)

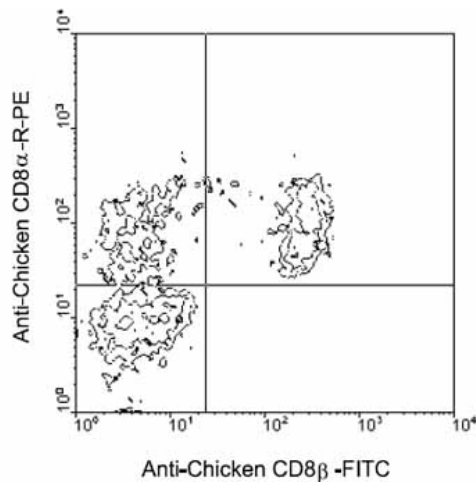
**Background:**

The CD8 antigen is a cell surface glycoprotein found on most cytotoxic T lymphocytes that mediates efficient cell to cell interactions within the immune system. The CD8 antigen, acting as a coreceptor, and the T cell receptor on the T lymphocyte recognize antigen displayed by an antigen presenting cell (APC) in the context of class I MHC molecules. The functional coreceptor is either a homodimer composed of two alpha chains, or a heterodimer composed of one alpha and one beta chain. Both alpha and beta chains share significant homology to immunoglobulin variable light chains.

Chicken CD8 is expressed on approximately 80% of thymocytes, 45% of blood mononuclear cells and 50% of spleen cells, but <1% of cells in the bursa and bone marrow. (Ref.1,2)

**Synonyms:**

CD8B, CD8B1

**Product images:**

Immunofluorescent Staining: Chicken IEL were double stained with Mouse anti-Chicken CD8b-FITC and Mouse anti-Chicken CD8b-RPE. Small lymphocytes were then gated and analyzed on a FACScan (TM) flow cytometer (BDIS, San Jose, CA). Amount Used: 1 ug/10e6 cells.