

Product datasheet for **AM08121FC-N**

CD28 Mouse Monoclonal Antibody [Clone ID: AV7]

Product data:

Product Type:	Primary Antibodies
Clone Name:	AV7
Applications:	FC
Recommended Dilution:	Flow Cytometry: < / = 1 µg/10e6 cells. (Ref.1)
Reactivity:	Chicken
Host:	Mouse
Isotype:	IgG1
Clonality:	Monoclonal
Specificity:	This antibody recognizes Chicken CD28, a monomeric molecule of Mr 40-44 kDa with 50% amino acid sequence identity with mammalian CD28.
Formulation:	PBS containing 0.09% Sodium Azide as preservative. Label: FITC State: Liquid purified Ig fraction. Label: Fluorescein Isothiocyanate Isomer 1
Concentration:	lot specific
Conjugation:	FITC
Storage:	Store the antibody undiluted at 2-8°C for one month or in (aliquots) at -20°C for longer. This product is photosensitive and should be protected from light. Avoid repeated freezing and thawing.
Stability:	Shelf life: one year from despatch.
Gene Name:	CD28 molecule
Database Link:	Entrez Gene 396249 Chicken P31043



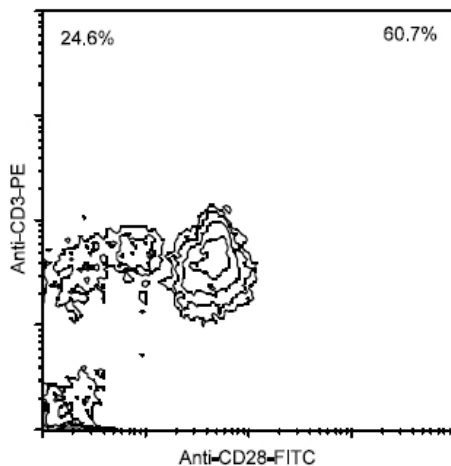
[View online »](#)

Background:

Chicken CD28 antigen is a type I transmembrane monomeric glycoprotein which does not contain the cysteine residues that form disulfide-linked covalent homodimers found in the mammalian counterpart. This may reduce the avidity of binding to individual ligand molecules expected to be present on Ag presenting cells. Peripheral gamma/delta+ T cells are CD28-negative. (Ref.1) Monoclonal antibodies against CD28 have a costimulatory effect on T cells stimulated by phorbol myristate acetate (PMA), concanavalin A or MAb against the avian T cell receptor (TCR). Both Vbeta1- and Vbeta2-expressing cells respond equally well to stimulation with anti-CD28 in combination with PMA. These responses are resistant to cyclosporin A, but inhibited by herbimycin A, suggesting that CD28 employs a signalling pathway at least partly distinct from that triggered by TCR/CD3. (Ref.2)

Synonyms:

TP44

Product images:

Immunofluorescent Staining: Chicken peripheral blood mononuclear cells were double stained with Mouse anti-Chicken CD28-FITC and Mouse anti-Chicken CD3-PE. Small lymphocytes were then gated and analyzed on a FACScan (TM) flow cytometer (BDIS, San Jose, CA). Amount Used: 1 ug/10e6 cells.