

Product datasheet for **AM08116RP-N**

CD8 Mouse Monoclonal Antibody [Clone ID: CT-8]

Product data:

Product Type:	Primary Antibodies
Clone Name:	CT-8
Applications:	FC
Recommended Dilution:	Flow Cytometry ($\leq 0.2 \mu\text{g}/10^6$ cells): Identification and enumeration of CD8 ⁺ cells. (Ref.2)
Reactivity:	Chicken
Host:	Mouse
Isotype:	IgG1
Clonality:	Monoclonal
Immunogen:	Chicken thymocytes and Ig-negative blood leukocytes.
Specificity:	This antibody recognizes alpha chain (34-kDa) of Chicken CD8. The monoclonal antibody CT-8 recognizes the CD8 α chain and has been shown to react to a polymorphic determinant in Turkey.
Formulation:	PBS containing 0.09% Sodium Azide as preservative and a stabilizing agent. Label: PE State: Liquid purified Ig fraction. Label: R-Phycoerythrin
Concentration:	lot specific
Conjugation:	PE
Storage:	Store the antibody undiluted at 2-8°C. DO NOT FREEZE! This product is photosensitive and should be protected from light. Avoid repeated freezing and thawing.
Stability:	Shelf life: one year from despatch.
Database Link:	Q0R4I4



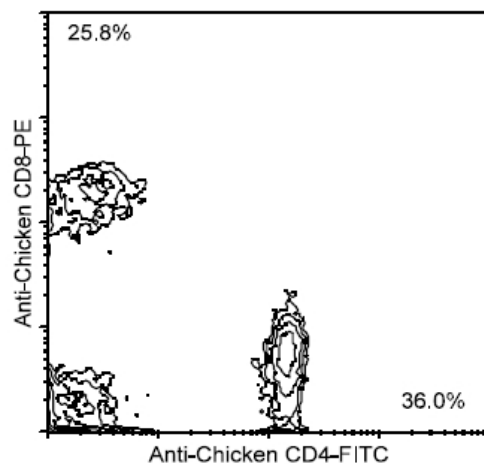
[View online »](#)

Background:

The CD8 antigen is a cell surface glycoprotein found on most cytotoxic T lymphocytes that mediates efficient cell to cell interactions within the immune system. The CD8 antigen, acting as a coreceptor, and the T cell receptor on the T lymphocyte recognize antigen displayed by an antigen presenting cell (APC) in the context of class I MHC molecules. The functional coreceptor is either a homodimer composed of two alpha chains, or a heterodimer composed of one alpha and one beta chain. Both alpha and beta chains share significant homology to immunoglobulin variable light chains. CD8 is expressed on most thymocytes and approximately 1/3 of peripheral blood T cells in humans. CD8 alpha/beta heterodimers are expressed only on TCR alpha/beta T cells, whereas CD8 alpha homodimers can be expressed on alpha/beta and gamma/delta T cells and some NK cells in humans. The pattern of expression in other species has not been well documented.

Synonyms:

CD8 alpha chain, CD8A, MAL

Product images:

Immunofluorescent Staining: Chicken PBMC were double stained with Mouse anti-Chicken CD4-FITC and mouse anti-chicken CD8-R-PE. Small lymphocytes were then gated and analyzed on a FACScan (TM) flow cytometer (BDIS, San Jose, CA). Amount Used: < / = 0.2 g/