

## Product datasheet for **AM08115RP-N**

### CD4 Mouse Monoclonal Antibody [Clone ID: CT-4]

#### Product data:

Product Type:	Primary Antibodies
Clone Name:	CT-4
Applications:	FC
Recommended Dilution:	<b>Flow Cytometry:</b> $\leq 0.2 \mu\text{g}/10^6$ cells. (Ref.1)
Reactivity:	Chicken
Host:	Mouse
Isotype:	IgG1
Clonality:	Monoclonal
Immunogen:	Chicken thymocytes and Ig-negative blood leukocytes.
Specificity:	Specific to CD4 (Mr. 64 kda). This antibody also reacts with Turkey and Quail as demonstrated by flow cytometry. This antibody inhibits both PHA- and Con A-induced proliferative responses of splenocytes, and PWM-induced IL-2 production.
Formulation:	PBS containing 0.09% Sodium Azide as preservative and a stabilizing agent. Label: PE State: Liquid purified Ig fraction. Label: R-Phycoerythrin
Concentration:	lot specific
Conjugation:	PE
Storage:	Store the antibody undiluted at 2-8°C. <b>DO NOT FREEZE!</b> This product is photosensitive and should be protected from light. Avoid repeated freezing and thawing.
Stability:	Shelf life: one year from despatch.
Database Link:	<a href="#">Q6Q4G0</a>



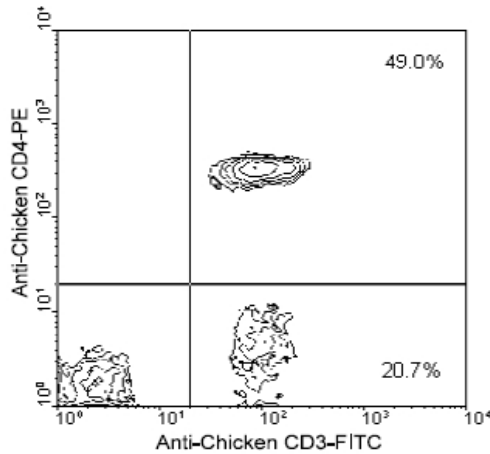
[View online »](#)

**Background:**

CD4 is a single chain transmembrane glycoprotein (59 kDa) which belongs to the immunoglobulin superfamily. CD4 is present on a subset of T lymphocytes ("helper/inducer" T cells) and is also expressed at a lower level on monocytes, tissue macrophages and granulocytes. The antigen is involved in binding to MHC class II molecules. The intracellular domain of the antigen is associated with p56lck protein tyrosine kinase.

**Synonyms:**

T-cell surface antigen T4/Leu-3

**Product images:**

Immunofluorescent Staining: Chicken peripheral blood mononuclear cells were double stained with Mouse anti-Chicken CD4-PE and Mouse anti-Chicken CD3-FITC ([AM08114FC-N]). Small lymphocytes were then gated and analyzed on a FACScan (TM) flow cytometer (BDIS, S