

Product datasheet for **AM08112RP-N**

CD8A Mouse Monoclonal Antibody [Clone ID: fCD8]

Product data:

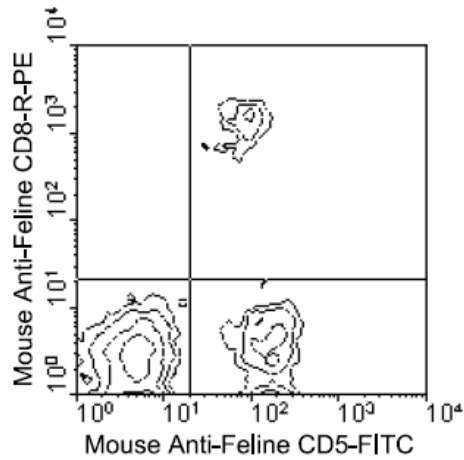
Product Type:	Primary Antibodies
Clone Name:	fCD8
Applications:	FC
Recommended Dilution:	Flow Cytometry: < / = 0.2 µg/10e6 cells. (Ref.1-2)
Reactivity:	Feline
Host:	Mouse
Isotype:	IgG1
Clonality:	Monoclonal
Specificity:	This antibody recognizes Feline CD8 (Mr. 70 kDa) (38/31 kDa under reducing conditions).
Formulation:	PBS containing 0.09% Sodium Azide as preservative and a stabilizing agent. Label: PE State: Liquid purified Ig fraction. Label: R-Phycoerythrin
Concentration:	lot specific
Conjugation:	PE
Storage:	Store the antibody undiluted at 2-8°C. DO NOT FREEZE! This product is photosensitive and should be protected from light. Avoid repeated freezing and thawing.
Stability:	Shelf life: one year from despatch.
Database Link:	P41688
Background:	The CD8 antigen is a cell surface glycoprotein found on most cytotoxic T lymphocytes that mediates efficient cell to cell interactions within the immune system. The CD8 antigen, acting as a coreceptor, and the T cell receptor on the T lymphocyte recognize antigen displayed by an antigen presenting cell (APC) in the context of class I MHC molecules. The functional coreceptor is either a homodimer composed of two alpha chains, or a heterodimer composed of one alpha and one beta chain. Both alpha and beta chains share significant homology to immunoglobulin variable light chains.



[View online »](#)

Synonyms: CD8 alpha chain, CD8A, MAL

Product images:



Immunofluorescent Staining: Peripheral blood mononuclear cells from a healthy domestic Cat were double-stained with Mouse anti-Feline CD5-FITC (Cat.[AM08111FC-N]) and Mouse anti-Feline CD8-PE. Small lymphocytes were then gated and analyzed by two-color flow cytometry on a FACScan (TM) flow cytometry (BDIS, San Jose, CA). Amount Used: 0.2 ug/10e6 cells.