

## Product datasheet for **AM08107FC-N**

### CD8A Mouse Monoclonal Antibody [Clone ID: 76-2-11]

#### Product data:

Product Type:	Primary Antibodies
Clone Name:	76-2-11
Applications:	FC
Recommended Dilution:	<b>Flow Cytometry:</b> < / = 1 µg/10e6 cells. (Ref.1-3)
Reactivity:	Porcine
Host:	Mouse
Isotype:	IgG2a
Clonality:	Monoclonal
Specificity:	This antibody reacts with Porcine CD8 alpha (Mr. 32-34 kDa). (Ref-1-3)
Formulation:	PBS containing 0.09% Sodium Azide as preservative. Label: FITC State: Liquid purified Ig fraction. Label: Fluorescein Isothiocyanate Isomer 1
Concentration:	lot specific
Conjugation:	FITC
Storage:	Store the antibody undiluted at 2-8°C for one month or in (aliquots) at -20°C for longer. This product is photosensitive and should be protected from light. Avoid repeated freezing and thawing.
Stability:	Shelf life: one year from despatch.
Database Link:	<a href="#">Entrez Gene 396627 Pig Q6R2U9</a>



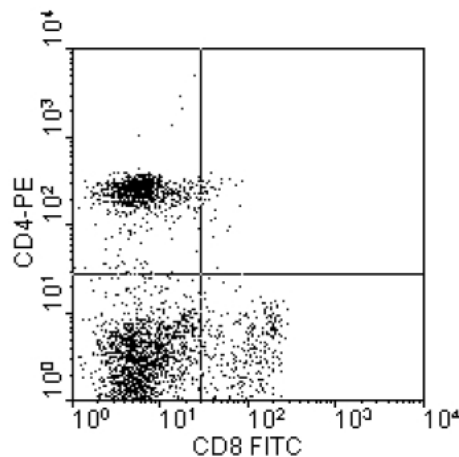
[View online »](#)

**Background:**

The CD8 antigen is a cell surface glycoprotein found on most cytotoxic T lymphocytes that mediates efficient cell to cell interactions within the immune system. The CD8 antigen, acting as a coreceptor, and the T cell receptor on the T lymphocyte recognize antigen displayed by an antigen presenting cell (APC) in the context of class I MHC molecules. The functional coreceptor is either a homodimer composed of two alpha chains, or a heterodimer composed of one alpha and one beta chain. Both alpha and beta chains share significant homology to immunoglobulin variable light chains. CD8 is expressed on most thymocytes and approximately 1/3 of peripheral blood T cells in humans. CD8 alpha/beta heterodimers are expressed only on TCR alpha/beta T cells, whereas CD8 alpha homodimers can be expressed on alpha/beta and gamma/delta T cells and some NK cells in humans. The pattern of expression in other species has not been well documented.

**Synonyms:**

CD8 alpha chain, CD8A, MAL

**Product images:**

Immunofluorescent Staining: Peripheral blood mononuclear cells were isolated from heparinized pig blood on Ficoll-Hypaque density gradients and double stained with Mouse anti-Pig CD8a-FITC and Mouse anti-Pig CD4a-PE. Lymphocytes were gated and analyzed on a FACScan (TM) flow cytometer (BDIS, San Jose, CA). Amount Used: 1 ug/10e6 cells.