

Product datasheet for **AM08104FC-N**

CD3E Mouse Monoclonal Antibody [Clone ID: PPT3]

Product data:

Product Type:	Primary Antibodies
Clone Name:	PPT3
Applications:	FC
Recommended Dilution:	Flow Cytometry: $\leq 1 \mu\text{g}/10^6$ cells (Ref.1)
Reactivity:	Porcine
Host:	Mouse
Isotype:	IgG1
Clonality:	Monoclonal
Immunogen:	Purified CD3 molecules from porcine thymus
Specificity:	This antibody recognizes Porcine CD3e (Mr. 23 kDa). The Monoclonal antibody PPT3 is Mitogenic when presented to peripheral blood mononuclear cells in immobilized form. (Ref.1)
Formulation:	PBS containing 0.09% Sodium Azide as preservative. Label: FITC State: Liquid purified Ig fraction. Label: Fluorescein Isothiocyanate Isomer 1
Concentration:	lot specific
Conjugation:	FITC
Storage:	Store undiluted at 2-8°C for one month or in (aliquots) at -20°C for longer. This product is photosensitive and should be protected from light. Avoid repeated freezing and thawing.
Stability:	Shelf life: one year from despatch.
Database Link:	Q7YRN2



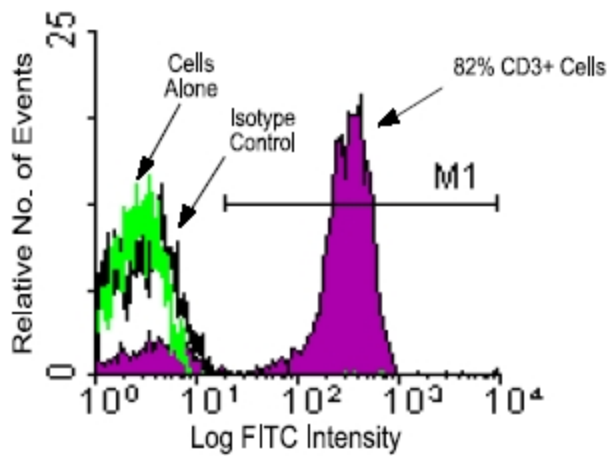
[View online »](#)

Background:

CD3 epsilon, a member of the immunoglobulin superfamily of cell surface receptors, is comprised of five invariable chains (designated as gamma, delta, epsilon, zeta and eta) ranging in size from 16-28 kDa. CD3 epsilon is closely associated with the T cell antigen receptor (TCR), and is present on thymocytes, CD8+ and CD4+ positive cells. The CD3 epsilon complex mediates signal transduction. It plays a major role in signaling during antigen recognition, leading to T cell activation. The TCR/CD3E complex of T lymphocytes consists of either a TCR alpha/beta or TCR gamma/delta heterodimer coexpressed at the cell surface with the invariant subunits of CD3 labeled gamma, delta, epsilon, zeta, and eta. CD3 epsilon is expressed on all T cells of all mouse strains.

Synonyms:

T3/Leu-4

Product images:

Immunofluorescent Staining: Peripheral blood mononuclear cells were isolated from heparinized pig blood on Ficoll-Hypaque density gradients and stained with Mouse anti-Pig CD3E-FITC. Lymphocytes were gated and analyzed on a FACScan (TM) flow cytometer (BDIS, San Jose, CA). Amount Used: 1 ug/10e6 cells.