

Product datasheet for **AM08103FC-N**

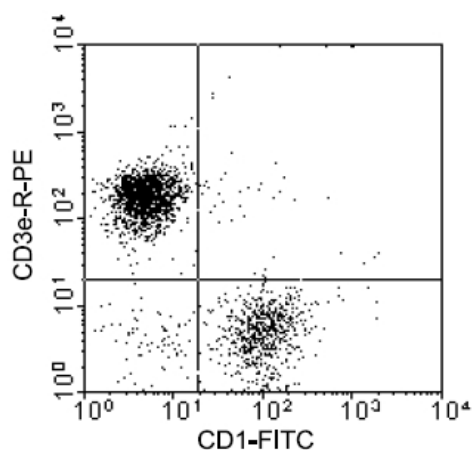
CD1.1 Mouse Monoclonal Antibody [Clone ID: 76-7-4]

Product data:

Product Type:	Primary Antibodies
Clone Name:	76-7-4
Applications:	FC
Recommended Dilution:	Flow Cytometry: $\leq 1 \mu\text{g}/10^6$ cells (Ref.1,2,5,7-11).
Reactivity:	Porcine
Host:	Mouse
Isotype:	IgG2a
Clonality:	Monoclonal
Specificity:	This antibody is specific for Porcine CD1 (Mr 43-49 kDa).
Formulation:	PBS containing 0.09% Sodium Azide as preservative. Label: FITC State: Liquid purified Ig fraction. Label: Fluorescein Isothiocyanate Isomer 1
Concentration:	lot specific
Conjugation:	FITC
Storage:	Store undiluted at 2-8°C for one month or in (aliquots) at -20°C for longer. This product is photosensitive and should be protected from light. Avoid repeated freezing and thawing.
Stability:	Shelf life: one year from despatch.
Database Link:	Entrez Gene 396785 Pig Q9XS72
Background:	All CD1 molecules, except CD1e, are cell surface glycoproteins that are structurally related to the MHC molecules, however, in distinction, CD1 proteins are essentially non polymorphic. CD1 has considerable structural homology with both MHC class I and class II molecules, and CD1 molecules are involved in T cell activation. In contrast to MHC, however, CD1 molecules appear to present predominantly non peptide molecules originating from lipids and glycolipids.
Synonyms:	T6/Leu-6, hTa1



[View online »](#)

Product images:

Immunofluorescent Staining: Peripheral blood mononuclear cells were isolated from heparinized Pig blood on Ficoll-Paque density gradients and incubated with Mouse anti-Pig CD1 antibody-FITC (AM08103FC-N) and Mouse anti-Pig CD3e antibody-PE (AM08104RP-N). The cells were then stained with Streptavidin-FITC. Lymphocytes were gated and analyzed on a FACScan (TM) flow cytometer (BDB, San Jose, CA). Amount Used: 1 ug/10e6 cells.