

## Product datasheet for **AM08095RP-N**

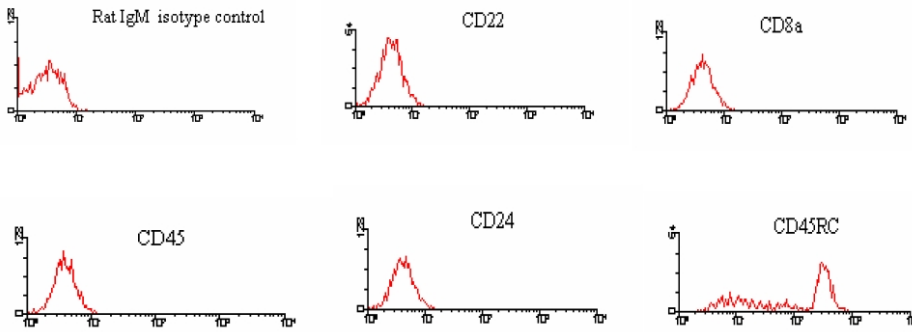
### Rat IgM (Mu chain specific) Mouse Monoclonal Antibody [Clone ID: M 2A1]

#### Product data:

Product Type:	Secondary Antibodies
Product Name:	Rat IgM (Mu chain specific) Mouse Monoclonal Antibody [Clone ID: M 2A1]
Clone Name:	M 2A1
Applications:	FC, IF
Recommended Dilution:	<b>Flow Cytometry:</b> (< / = 0.1 µg/10e6 cells) and <b>Immunofluorescence Microscopy:</b> Identification and enumeration of IgM+ cells. <b>FLISA:</b> < / = 1.0 µg/ml
Reactivity:	Rat
Host:	Mouse
Immunogen:	Rat IgM Hybridoma.
Isotype:	IgG1
Formulation:	PBS containing 0.09% Sodium Azide as preservative and a stabilizing agent. Label: PE State: Liquid purified Ig fraction. Label: R-Phycoerythrin
Concentration:	lot specific
Conjugation:	PE
Storage:	Store the antibody undiluted at 2-8°C. <b>DO NOT FREEZE!</b> This product is photosensitive and should be protected from light. Avoid repeated freezing and thawing.



[View online »](#)

**Product images:**

**Immunofluorescent Staining:** BALB/c splenocytes were incubated with Rat IgM Isotype Control, Rat anti-Mouse CD22 (2D6, Rat IgG1), Rat anti-Mouse CD8 (53-6.7, Rat IgG2a), Rat anti-Mouse CD45 (LCA) (13/2.3, Rat IgG2b), Rat anti-Mouse CD3(C363.29B, Rat IgG2c), and Rat anti-Mouse CD45RC (GL24, rat IgM). After washing, the cells were stained with PE-labeled Mouse Anti-Rat IgM. Small Lymphocytes were gated and analyzed on a FACScan(TM) flow cytometer (BDIS, San Jose, CA). Amount Used:  $< / = 0.02 \mu\text{g}/10\text{e}6$  cells.