

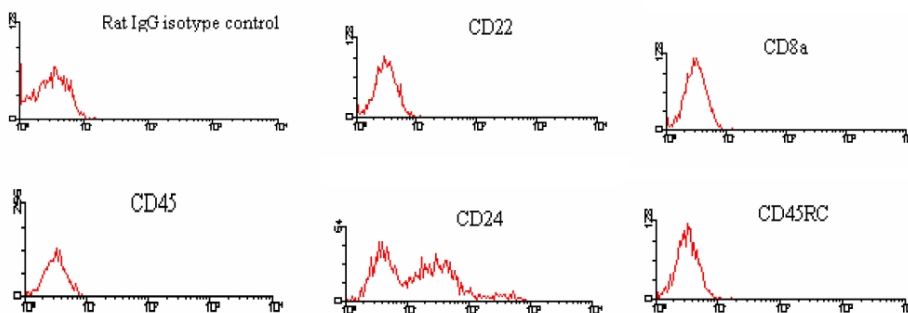
Product datasheet for **AM08094FC-N**

Rat IgG2c (gamma 2c chain specific) Mouse Monoclonal Antibody [Clone ID: 2C 8F1]

Product data:

Product Type:	Secondary Antibodies
Product Name:	Rat IgG2c (gamma 2c chain specific) Mouse Monoclonal Antibody [Clone ID: 2C 8F1]
Clone Name:	2C 8F1
Applications:	FC, IF
Recommended Dilution:	Flow Cytometry: $< / = 0.3 \mu\text{g}/10\text{e6 cells}$. Immunofluorescence Microscopy: Identification and enumeration of IgG2c+ cells.
Reactivity:	Rat
Host:	Mouse
Isotype:	IgG2a
Formulation:	PBS containing 0.09% Sodium Azide as preservative. Label: FITC State: Liquid purified Ig fraction. Label: Fluorescein Isothiocyanate Isomer 1
Concentration:	lot specific
Conjugation:	FITC
Storage:	Store the antibody undiluted at 2-8°C for one month or in (aliquots) at -20°C for longer. This product is photosensitive and should be protected from light. Avoid repeated freezing and thawing.

Product images:



Immunofluorescent Staining: BALB/c splenocytes were incubated with Rat IgG2a Isotype Control, Rat anti-Mouse CD22 (2D6, Rat IgG1), Rat anti-Mouse CD8 (53-6.7, Rat IgG2a), Rat anti-Mouse CD45 (LCA) (13/2.3, Rat IgG2b), Rat anti-Mouse CD24 (30-F1, Rat IgG2c), and Rat anti-Mouse CD45RC (GL24, Rat IgM). After washing, the cells were stained with FITC-labeled Mouse Anti-Rat IgG2c. Small Lymphocytes were gated and analyzed on a FACScan(TM) flow cytometer (BDIS, San Jose, CA). Amount Used: $< / = 0.3 \mu\text{g}/10\text{e6 cells}$.



[View online >](#)