

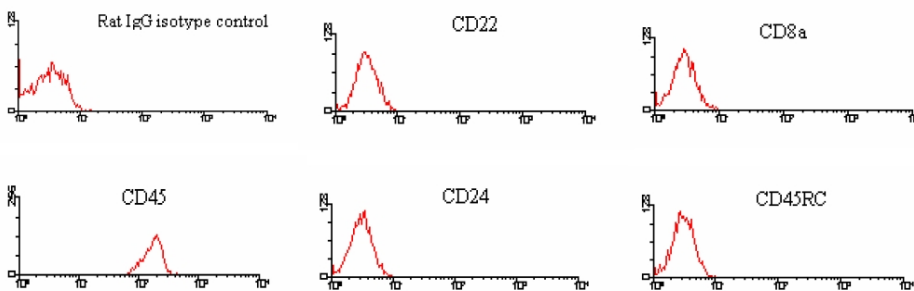
Product datasheet for AM08093FC-N

Rat IgG2b (Gamma-2b chain specific) Mouse Monoclonal Antibody [Clone ID: 2B 10A8]

Product data:

Product Type:	Secondary Antibodies
Product Name:	Rat IgG2b (Gamma-2b chain specific) Mouse Monoclonal Antibody [Clone ID: 2B 10A8]
Clone Name:	2B 10A8
Applications:	FC, IF
Recommended Dilution:	Flow Cytometry: $< / = 0.3 \mu\text{g}/10\text{e}6$ cells. Immunofluorescence Microscopy: Identification and enumeration of IgG2b+ cells.
Reactivity:	Rat
Host:	Mouse
Isotype:	IgG2b
Formulation:	PBS containing 0.09% Sodium Azide as preservative. Label: FITC State: Liquid purified Ig fraction. Label: Fluorescein Isothiocyanate Isomer 1
Concentration:	lot specific
Conjugation:	FITC
Storage:	Store the antibody undiluted at 2-8°C for one month or in (aliquots) at -20°C for longer. This product is photosensitive and should be protected from light. Avoid repeated freezing and thawing.

Product images:



Immunofluorescent Staining: BALB/c splenocytes were incubated with Rat IgG2b Isotype Control, Rat anti-Mouse CD22 (2D6, Rat IgG1), Rat anti-Mouse CD8 (53-6.7, Rat IgG2a), Rat anti-Mouse CD45 (LCA) (13/2.3, Rat IgG2b), Rat anti-Mouse CD24 (30-F1, Rat IgG2c), and Rat anti-Mouse CD45RC (GL24, Rat IgM). After washing, the cells were stained with FITC-labeled Mouse Anti-Rat IgG2b. Small Lymphocytes were gated and analyzed on a FACScan(TM) flow cytometer (BDIS, San Jose, CA). Amount Used: $< / = 0.3 \mu\text{g}/10\text{e}6$ cells.



[View online >](#)