

Product datasheet for **AM08092RP-N**

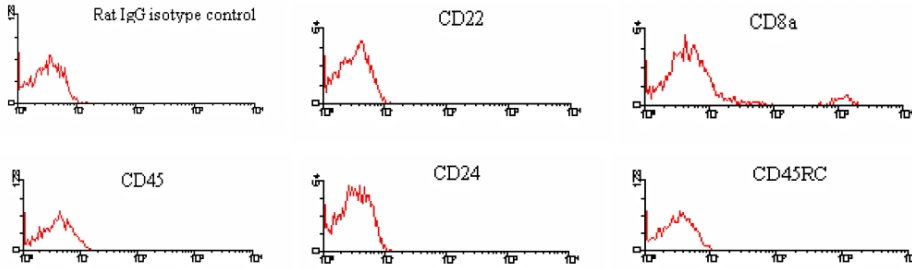
Rat IgG2a (gamma 2a chain specific) Mouse Monoclonal Antibody [Clone ID: 2A 8F4]

Product data:

Product Type:	Secondary Antibodies
Product Name:	Rat IgG2a (gamma 2a chain specific) Mouse Monoclonal Antibody [Clone ID: 2A 8F4]
Clone Name:	2A 8F4
Applications:	FC, IF
Recommend Dilution:	Flow Cytometry: < / = 0.1 µg/10e6 cells. Immunofluorescence Microscopy: Identification and enumeration of IgG2a+ cells.
Reactivity:	Rat
Host:	Mouse
Isotype:	IgG1
Formulation:	PBS containing 0.09% Sodium Azide as preservative and a stabilizing agent. Label: PE State: Liquid purified Ig fraction. Label: R-Phycoerythrin
Concentration:	lot specific
Conjugation:	PE
Storage:	Store the antibody undiluted at 2-8°C. DO NOT FREEZE! This product is photosensitive and should be protected from light. Avoid repeated freezing and thawing.



[View online »](#)

Product images:

Immunofluorescent Staining: BALB/c splenocytes were incubated with Rat IgG1 Isotype Control, Rat anti-Mouse CD22 (2D6, Rat IgG1), Rat anti-Mouse CD8 (53-6.7, Rat IgG2a), Rat anti-Mouse CD45 (LCA) (I3/2.3, Rat IgG2b), Rat anti-Mouse CD24 (30-F1, Rat IgG2c), and Rat anti-Mouse CD45RC (GL24, Rat IgM). After washing, the cells were stained with PE-labeled Mouse Anti-Rat IgG2a. Small Lymphocytes were gated and analyzed on a FACScan(TM) flow cytometer (BDIS, San Jose, CA). Amount Used: $< / = 0.02$ $\mu\text{g}/10\text{e}6$ cells.