

Product datasheet for **AM08084FC-N**

Cd86 Rat Monoclonal Antibody [Clone ID: 2D10]

Product data:

Product Type:	Primary Antibodies
Clone Name:	2D10
Applications:	FC, IHC
Recommended Dilution:	Flow Cytometry: $\leq 1 \mu\text{g}/10^6$ cells. Identification and enumeration of CD86+ cells. (Ref.1,2,4,6,7). Immunohistochemistry on Frozen Sections (Ref.4).
Reactivity:	Mouse
Host:	Rat
Isotype:	IgG2b
Clonality:	Monoclonal
Immunogen:	Mouse B cell lymphoma cell line 5C2
Specificity:	This antibody recognises CD86, the B7-2 costimulatory molecule and a ligand for CD28 and CD152.
Formulation:	PBS containing 0.09% Sodium Azide as preservative. Label: FITC State: Liquid purified Ig fraction. Label: Fluorescein Isothiocyanate Isomer 1
Concentration:	lot specific
Conjugation:	FITC
Storage:	Store the antibody undiluted at 2-8°C for one month or in (aliquots) at -20°C for longer. This product is photosensitive and should be protected from light. Avoid repeated freezing and thawing.
Stability:	Shelf life: one year from despatch.
Gene Name:	CD86 antigen
Database Link:	Entrez Gene 12524 Mouse P42082



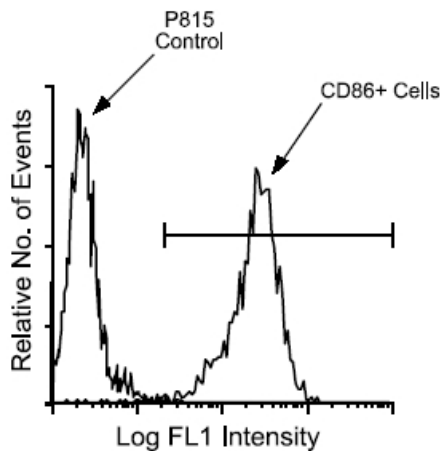
[View online »](#)

Background:

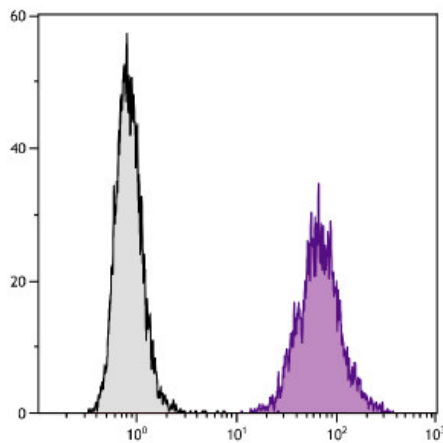
CD86, also known as B72, is a type I transmembrane glycoprotein and a member of the immunoglobulin superfamily of cell surface receptors. It is expressed at high levels on resting peripheral monocytes and dendritic cells and at very low density on resting B and T lymphocytes. CD86 expression is rapidly upregulated by B cell specific stimuli with peak expression at 18 to 42 hours after stimulation. CD86, along with CD80/B71, is an important accessory molecule in T cell costimulation via its interaction with CD28 and CD152/CTLA4. Since CD86 has rapid kinetics of induction, it is believed to be the major CD28 ligand expressed early in the immune response. It is also found on malignant Hodgkin and Reed Sternberg (HRS) cells in Hodgkin's disease. CD86 interacts with HHV8 (KSHV) MIR2 protein.

Synonyms:

CD28LG2, Activation B7-2 antigen, B70, BU63, B7.2, FUN-1

Product images:


Immunofluorescent Staining: BALB/c spleen cells were activated by incubation for 72 hours with LPS. The cells were then harvested and stained with anti-Mouse CD86-FITC. A wide gate was set to include small, medium and large cells, following which the cells were analyzed on a FACScan (TM) flow cytometer (BDIS, San Jose, CA). Amount Used: ≤ 1 μ g/10e6 cells.



BA/2 Mouse mastocytoma cell line P815 and mB7.2-Ig transfected P815 cells were stained with Rat anti-Mouse CD86 Antibody