

## Product datasheet for **AM08080FC-N**

### H2-D1 Mouse Monoclonal Antibody [Clone ID: 28-14-8]

#### Product data:

Product Type:	Primary Antibodies
Clone Name:	28-14-8
Applications:	FC
Recommended Dilution:	<b>Flow Cytometry:</b> $\leq 1 \mu\text{g}/10^6$ cells.
Reactivity:	Mouse
Host:	Mouse
Isotype:	IgG2a
Clonality:	Monoclonal
Immunogen:	C3H.SW mouse splenocytes. (Ref.1,2)
Specificity:	<p>This antibody is specific to an epitope in the alpha 3 domain of H-2D<sup>b</sup>. It binds to the alpha 3 domain of H-2D<sup>b</sup> in the presence or absence of beta 2 microglobulin. (Ref.7,8) It cross reacts with the alpha 3 domain of H-2L<sup>d</sup>, but not K<sup>d</sup> or D<sup>d</sup>, and with H-2D<sup>q</sup> and/or L<sup>q</sup>.</p> <p>The antibody has been shown to block H-2L<sup>d</sup>-specific and H-2L<sup>d</sup>-restricted antigen-specific lysis of target cells by cytotoxic T lymphocytes, (Ref.9-11) but it does not block recognition of H-2L<sup>d</sup>-positive target cells by Ly-6G2-positive NK cells. (Ref.12).</p> <p><b>Customer feedback:</b> Clone 28-14-8 does not cross-react with Human cells.</p>
Formulation:	<p>1.0 ml PBS containing 0.09% Sodium Azide as preservative</p> <p>Label: FITC</p> <p>State: Liquid purified IgG fraction</p> <p>Label: Fluorescein Isothiocyanate Isomer 1</p>
Concentration:	lot specific
Conjugation:	FITC
Storage:	<p>Store undiluted at 2-8°C.</p> <p>This product is photosensitive and should be protected from light.</p>
Stability:	Shelf life: one year from despatch.
Database Link:	<a href="#">Entrez Gene 14964 Mouse P01899</a>



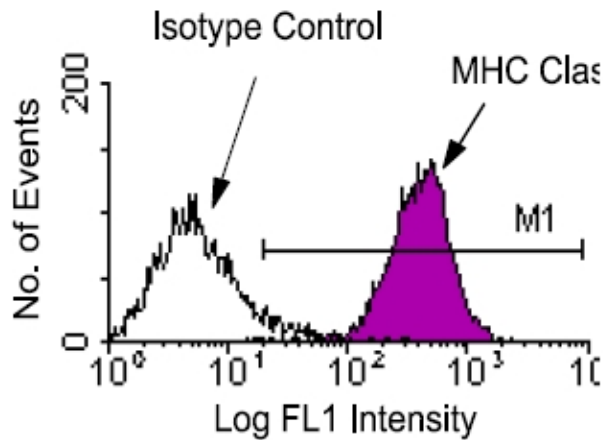
[View online »](#)

**Background:**

The 'classical' MHC Class I molecules are histocompatibility antigens encoded by the H-2 gene complex and consist of heterodimers of highly polymorphic alpha chains noncovalently associated with the invariant beta 2-Microglobulin. (Ref.3,4) These antigens are expressed on most nucleated cells but expression varies on different cell types. MHC Class I molecules present endogenously synthesized peptides to CD8<sup>+</sup> T lymphocytes, which are usually cytotoxic T cells. (Ref.5)

**Synonyms:**

H-2D(B), H2-D1

**Product images:**

Immunofluorescent Staining: Splenocytes from DBA1/J mice were stained with Mouse anti-Mouse H-2Db-FITC. Small lymphocytes were then gated and analyzed on a FACScan (TM) flow cytometer (BDIS, San Jose, CA). Amount Used: 1 ug/10e6 cells.