

Product datasheet for **AM08075FC-N**

MHC Class II I-Ab Rat Monoclonal Antibody [Clone ID: NIMR-4]

Product data:

Product Type:	Primary Antibodies
Clone Name:	NIMR-4
Applications:	FC
Recommended Dilution:	Flow Cytometry: $< / = 1 \mu\text{g}/10\text{e}6$ cells.
Reactivity:	Mouse
Host:	Rat
Isotype:	IgG2b
Clonality:	Monoclonal
Specificity:	Specific to MHC Class II molecules. This antibody reacts specifically with a non-polymorphic I-A-encoded epitope on MHC Class II antigens. Class II antigens are predominantly expressed on antigen-presenting cells including B lymphocytes, macrophages, dendritic cells and certain epithelial cells.
Formulation:	PBS containing 0.09% Sodium Azide as preservative. Label: FITC State: Liquid purified Ig fraction. Label: Fluorescein Isothiocyanate Isomer 1
Concentration:	lot specific
Conjugation:	FITC
Storage:	Store the antibody undiluted at 2-8°C for one month or in (aliquots) at -20°C for longer. This product is photosensitive and should be protected from light. Avoid repeated freezing and thawing.
Stability:	Shelf life: one year from despatch.
Database Link:	P18468



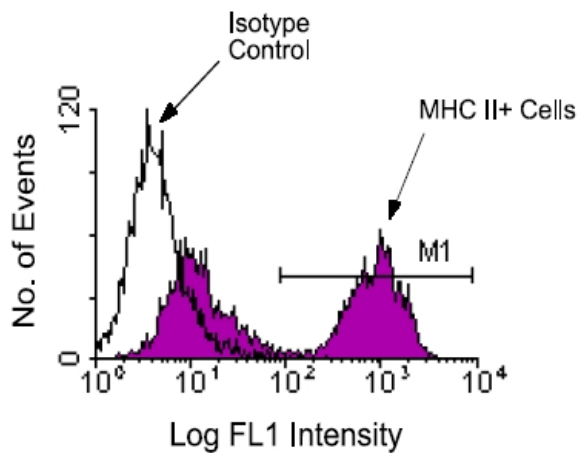
[View online »](#)

Background:

MHC Class II antigens are heterodimers consisting of one alpha chain(31-34kD) and one beta chain (26-29kD). The family of monoclonal antibodies (ER-TR 3, ER-TR 2, ER-TR 1) detect MHC class II antigens encoded by the murine Ia region of the H-2 complex, corresponding to the human HLA-DR region. MHC Class II antigens are a valuable tool for studying T helper cell interaction with class II positive antigen presenting cells (dendritic cells, B cells, macrophages) and offer new possibilities for studying the development of T helper cells since these antibodies also stain stromal cells in the thymus. MHC Class II antigens are also inducible on a number of other cells (endothelium and epithelial cells) by interferon gamma.

Synonyms:

H2-Eb1, H-2 class II histocompatibility antigen I-A beta chain

Product images:

Immunofluorescent Staining: BALB/c spleen cells were stained with Rat Anti-Mouse MHC II-FITC, following which small lymphocytes were gated and analyzed on a FACScan (TM) flow cytometer (BDIS, San Jose, CA). Amount Used: ≤ 1 g/10e6 cells.