

## Product datasheet for **AM08070RP-N**

### CD45 / LCA (CD45RC) Rat Monoclonal Antibody [Clone ID: C455.1F]

#### Product data:

Product Type:	Primary Antibodies
Clone Name:	C455.1F
Applications:	FC
Recommended Dilution:	<b>Flow Cytometry:</b> Identification and enumeration of CD45RC+ cells ( $< / = 0.2 \mu\text{g}/10\text{e6 cells}$ ).
Reactivity:	Mouse
Host:	Rat
Isotype:	IgG2a
Clonality:	Monoclonal
Specificity:	This antibody recognises an exon C-dependent epitope of CD45 glycoprotein.
Formulation:	PBS containing 0.09% Sodium Azide as preservative and a stabilizing agent. Label: PE State: Liquid purified Ig fraction. Label: R-Phycoerythrin
Concentration:	lot specific
Conjugation:	PE
Storage:	Store the antibody undiluted at 2-8°C. <b>DO NOT FREEZE!</b> This product is photosensitive and should be protected from light. Avoid repeated freezing and thawing.
Stability:	Shelf life: one year from despatch.
Gene Name:	protein tyrosine phosphatase, receptor type, C
Database Link:	<a href="#">Entrez Gene 19264 Mouse P06800</a>



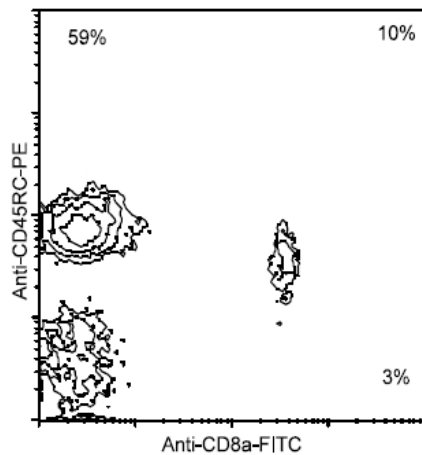
[View online »](#)

**Background:**

The CD45 family of cell surface glycoprotein antigens exist as a set of isoforms. (Ref.1-4) The patterns of monoclonal antibody recognition of the CD45 phenotypes can be restricted (CD45RA, RB and RC), or broader, such as the CD45 T 200 species (See also products AM08044). (Ref.1-4)The "restricted" subsets of this group arise as a result of translation of alternatively spliced mRNAs from exons A, B and C (exons 4, 5 and 6), where exons 3-15 encode the extracellular domain of the CD45 molecule. The restricted epitopes are differentially expressed on T and B lymphocytes, including functionally distinct T cells. CD45 (LCA) is a transmembrane phosphotyrosine phosphatase expressed on leucocytes. Myeloid cells do not express the RC isoform.

**Synonyms:**

PTPRC, Leukocyte common antigen, L-CA, T200

**Product images:**

Immunofluorescent Staining: Cells from BALB/c spleen were double stained with Rat anti-Mouse CD45RC-PE and Rat anti-Mouse CD8a-FITC ([AM08023FC-N] or [AM08023FC-S]), following which small lymphocytes were gated and analyzed on a FACScan (TM) flow cytometer (BD)