

Product datasheet for **AM08056PU-N**

Ly6c1 Rat Monoclonal Antibody [Clone ID: HK1.4]

Product data:

Product Type:	Primary Antibodies
Clone Name:	HK1.4
Applications:	FC, FN, IHC
Recommended Dilution:	Flow Cytometry: < / = 1 µg/10e6 cells. (Ref.1,2) Immunohistochemistry on Frozen Sections. (Ref.5) In vitro Activation of T Lymphocytes. (Ref.1,2)
Reactivity:	Mouse
Host:	Rat
Isotype:	IgG2c
Clonality:	Monoclonal
Specificity:	This antibody is specific to Murine Ly-6C (Mr. 18 kDa)
Formulation:	100 mM Borate Buffered Saline, pH 8.2. No preservatives or amine-containing buffer salts added. State: Purified State: Liquid purified Ig fraction.
Concentration:	lot specific
Conjugation:	Unconjugated
Storage:	Store the antibody undiluted at 2-8°C for one month or (in aliquots) at -20°C for longer. Avoid repeated freezing and thawing.
Stability:	Shelf life: one year from despatch.
Gene Name:	lymphocyte antigen 6 complex, locus C1
Database Link:	Entrez Gene 17067 Mouse POCW02



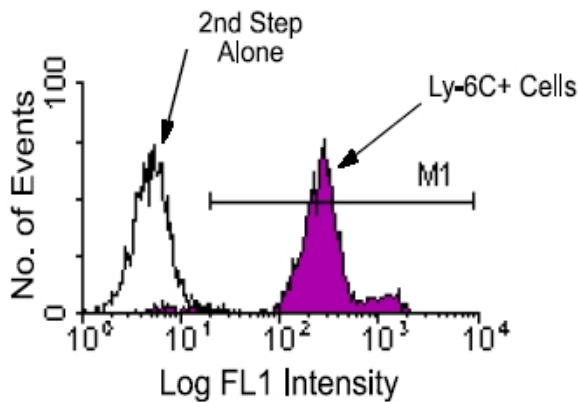
[View online »](#)

Background:

Ly-6C is a member of the Ly-6 multigene family of type V glycoposphatidylinositol-anchored cell surface proteins. It is expressed on bone marrow cells, monocytes/macrophages, neutrophils, endothelial cells, and T-cell subsets. Mice with the Ly-6.2 allotype (e.g., AKR, C57BL, C57BR, C57L, DBA/2, PL, SJL, SWR, 129) have subsets of CD4+Ly-6C+ and CD8+Ly-6C+ cells, while Ly-6.1 strains (e.g., A, BALB/c, CBA, C3H/He, DBA/1, NZB) have only CD8+Ly-6C+ lymphocytes. Ly-6C may play a role in the development and maturation of lymphocytes. (Ref.1-4)

Synonyms:

Lymphocyte antigen 6C2, Ly-6C2, Ly6C2, Mouse Macrophage Marker

Product images:

Immunofluorescent Staining: Bone marrow cells from C57BL/6 mice were labeled with purified Rat anti-Mouse Ly-6C and then stained with Goat anti-Rat IgG-FITC. Large cells were gated and analyzed by flow cytometry. Amount Used: 1 ug/10e6 cells.