

## Product datasheet for **AM08052FC-N**

### Cd80 Rat Monoclonal Antibody [Clone ID: 1G10]

#### Product data:

Product Type:	Primary Antibodies
Clone Name:	1G10
Applications:	FC
Recommended Dilution:	<b>Flow Cytometry:</b> < / = 1 µg/10e6 cells. (Ref.2,7)
Reactivity:	Mouse
Host:	Rat
Isotype:	IgG2a
Clonality:	Monoclonal
Specificity:	This antibody recognises CD80/B7-1 (Mr. 45-47 kDa). This Monoclonal CD80 antibody 1G10 blocks binding of CTLA-4 to CD80, but it does not block stimulation of T cells by natural antigenpresenting cells. (Ref.2,7).
Formulation:	PBS containing 0.09% Sodium Azide as preservative. Label: FITC State: Liquid purified Ig fraction. Label: Fluorescein Isothiocyanate Isomer 1
Concentration:	lot specific
Conjugation:	FITC
Storage:	Store the antibody undiluted at 2-8°C for one month or (in aliquots) at -20°C for longer. This product is photosensitive and should be protected from light. Avoid repeated freezing and thawing.
Stability:	Shelf life: one year from despatch.
Gene Name:	CD80 antigen
Database Link:	<a href="#">Entrez Gene 12519 Mouse</a> <a href="#">Q00609</a>



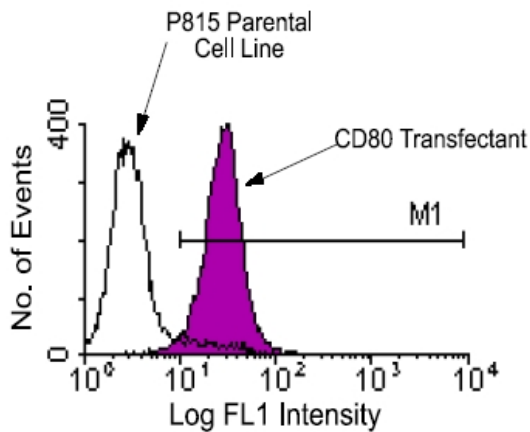
[View online »](#)

**Background:**

CD80 is a member of the Ig superfamily and serves as the ligand for two T cell molecules, CD28 and CTLA4. Interactions between CD28 and CD80 on activated B cells result in enhanced T cell activation. CD80 is rapidly induced on the surface of in vitro activated B cells, Epstein Barr Virus (EBV) transformed B cell lines, Burkitts lymphoma cell lines, freshly isolated follicular B lymphoma cells, T cells, and monocytes. It is also expressed at high levels in dendritic cells. It reacts weakly with a small proportion of non activated normal B cells and with HTLV1 infected T cells. CD80 does not react with peripheral monocytes, resting and activated normal T cells, T cell lines and T cell clones, nor with myelomonocytic cell lines.

**Synonyms:**

CD28LG, CD28LG1, LAB7, BB1, B7.1, B7-1

**Product images:**


Immunofluorescent Staining with CD80 antibody [1G10] (FITC): P815 cells transfected with CD80 or non-transfected P815 control cells were stained with Rat anti-Mouse CD80 antibody (FITC). Large cells were then gated and analyzed on a FACScan (TM) flow cytometer (BDIS, San Jose, CA). Amount Used: < / = 3 ug/10e6 cells.