

Product datasheet for **AM08046RP-N**

CD45 / LCA (CD45RC) Rat Monoclonal Antibody [Clone ID: GL24]

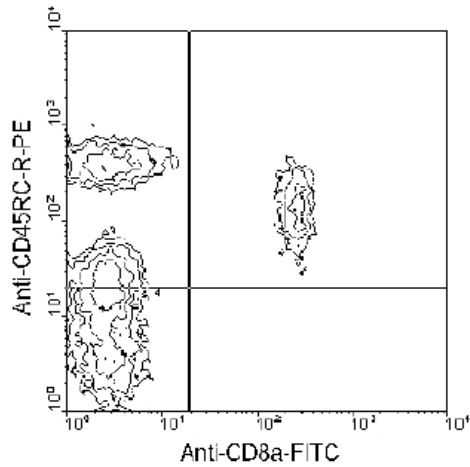
Product data:

Product Type:	Primary Antibodies
Clone Name:	GL24
Applications:	FC
Recommended Dilution:	Flow Cytometry. < / = 0.2 µg/10e6 cells. (Ref.1-3)
Reactivity:	Mouse
Host:	Rat
Isotype:	IgM
Clonality:	Monoclonal
Specificity:	This antibody is specific to an an exon C-dependent epitope of CD45 glycoprotein.
Formulation:	PBS containing 0.09% Sodium Azide as preservative and a stabilizing agent. Label: PE State: Liquid purified Ig fraction. Label: R-Phycoerythrin
Concentration:	lot specific
Conjugation:	PE
Storage:	Store the antibody undiluted at 2-8°C. DO NOT FREEZE! This product is photosensitive and should be protected from light. Avoid repeated freezing and thawing.
Stability:	Shelf life: one year from despatch.
Gene Name:	protein tyrosine phosphatase, receptor type, C
Database Link:	Entrez Gene 19264 Mouse P06800
Background:	CD45RC represents an exon C-dependent isoform of CD45 glycoprotein. It is expressed at high density on all B lymphocytes, at intermediate density on most CD8+ splenic T cells, and on two subpopulations of CD4+ splenic T cells with high and low density of expression. CD45RC is also present on a small subset of thymocytes. (Ref.1-4)
Synonyms:	PTPRC, Leukocyte common antigen, L-CA, T200



[View online »](#)

Product images:



Immunofluorescent Staining: BALB/c mesenteric lymph nodes were double-stained with Rat anti-Mouse CD45RC-PE and Rat anti-Mouse CD8a-FITC (Cat#[AM08023FC-N], clone 53-6.7). Small lymphocytes were gated and analyzed on a FACScan (TM) flow cytometer (BDIS, San Jos