

Product datasheet for **AM08045RP-N**

CD45 / LCA (CD45RB) Rat Monoclonal Antibody [Clone ID: C363.16A]

Product data:

Product Type:	Primary Antibodies
Clone Name:	C363.16A
Applications:	FC
Recommended Dilution:	Flow Cytometry. < / = 0.2 µg/10e6 cells. (Ref.1-3)
Reactivity:	Mouse
Host:	Rat
Isotype:	IgG2a
Clonality:	Monoclonal
Immunogen:	Cloned mouse Th2 cell lines. (Ref.1)
Specificity:	This antibody is specific to an exon B-dependent epitope of CD45 glycoprotein.
Formulation:	PBS containing 0.09% Sodium Azide as preservative and a stabilizing agent. Label: PE State: Liquid purified Ig fraction. Label: R-Phycoerythrin
Concentration:	lot specific
Conjugation:	PE
Storage:	Store the antibody undiluted at 2-8°C. DO NOT FREEZE! This product is photosensitive and should be protected from light. Avoid repeated freezing and thawing.
Stability:	Shelf life: one year from despatch.
Gene Name:	protein tyrosine phosphatase, receptor type, C
Database Link:	Entrez Gene 19264 Mouse P06800



[View online »](#)

Background:

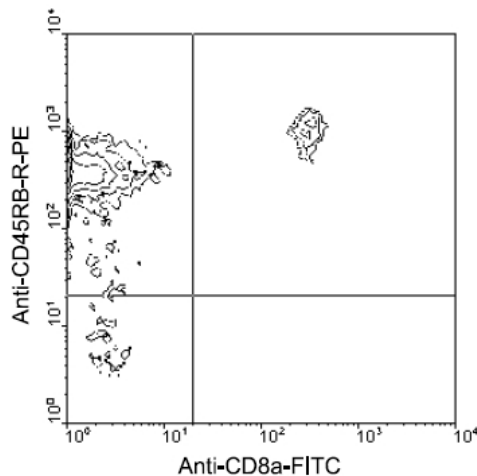
CD45RB is an isoform of CD45 with exon 5 splicing (encodes B determinant). It is a 220 kD glycoprotein expressed on peripheral B cells, naïve T cells, thymocytes, weakly on macrophages, and dendritic cells. It plays a critical role in TCR and BCR signaling. As T cells become activated and progress from naïve to memory cells, CD45RB expression is downregulated. Additionally, functionally distinct CD4 T cell subsets, which secrete differing cytokine profiles, can be separated by CD45RB intensity. The primary ligands for CD45 are galectin-1, CD2, CD3, CD4 and Thy-1.

Distribution: Peripheral B cells, naïve T cells, most thymocytes, low density on macrophages and dendritic cells.

Function: Phosphatase, T cell development and activation Structure: Phosphatase receptor (CD45 gene exon 5), 220 kD

Synonyms:

PTPRC, Leukocyte common antigen, L-CA, T200

Product images:

Immunofluorescent Staining: BALB/c spleen cells were double-stained with Rat anti-Mouse CD45RB-PE and Rat anti-Mouse CD8a-FITC. Small lymphocytes were gated and analyzed on a FACScan (TM) flow cytometer (BDIS, San Jose, CA). Amount Used: 0.1 g/10e6 cells.