

Product datasheet for **AM08044RP-N**

CD45 / LCA Rat Monoclonal Antibody [Clone ID: I3/2.3]

Product data:

Product Type:	Primary Antibodies
Clone Name:	I3/2.3
Applications:	FC
Recommended Dilution:	Flow Cytometry: $\leq 0.2 \mu\text{g}/10^6$ cells. (Ref.4,5)
Reactivity:	Mouse
Host:	Rat
Isotype:	IgG2b
Clonality:	Monoclonal
Specificity:	This antibody recognizes a framework epitope present on all CD45 isoforms. (Ref.3-6)
Formulation:	PBS containing 0.09% Sodium Azide as preservative and a stabilizing agent Label: PE State: Liquid purified Ig fraction Label: R-Phycoerythrin
Concentration:	lot specific
Conjugation:	PE
Storage:	Store the antibody undiluted at 2-8°C. DO NOT FREEZE! This product is photosensitive and should be protected from light. Avoid repeated freezing and thawing.
Stability:	Shelf life: one year from despatch.
Gene Name:	protein tyrosine phosphatase, receptor type, C
Database Link:	Entrez Gene 19264 Mouse P06800



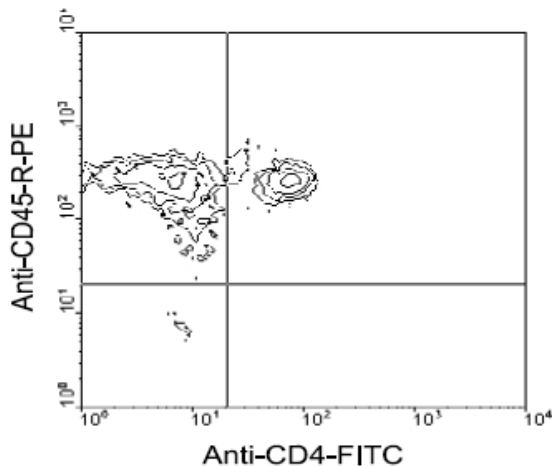
[View online »](#)

Background:

CD45 is a family of single chain transmembrane glycoproteins consisting of at least four isoforms (220, 205, 190, 180 kDa) which share a common large intracellular domain. Their extracellular domains are heavily glycosylated. The different isoforms are produced by alternative messenger RNA splicing of three exons of a single gene on chromosome 1. CD45 is expressed on cells of the human hematopoietic lineage (including hematopoietic stem cells) with the exception of mature red cells. It is not detected on differentiated cells of other tissues. It is likely that CD45 plays an important role in signal transduction, inhibition or upregulation of various immunological functions. Antibodies recognising a common epitope on all of the isoforms are termed CD45 while those recognising only individual isoforms are termed CD45RA or CD45RO etc.

Synonyms:

PTPRC, Leukocyte common antigen, L-CA, T200

Product images:

Immunofluorescent Staining: BALB/c spleen cells were double-stained with Rat anti-Mouse CD45-PE and Rat anti-Mouse CD4-FITC. Small lymphocytes were gated and analyzed on a FACScan (TM) flow cytometer (BDIS, San Jose, CA). Amount Used: 0.3 g/10e6 cells.