

Product datasheet for **AM08043FC-N**

Cd40lg Hamster Monoclonal Antibody [Clone ID: MR1]

Product data:

Product Type:	Primary Antibodies
Clone Name:	MR1
Applications:	FC
Recommended Dilution:	Flow Cytometry: < / 2 µg/10e6 cells. (Ref.1,5)
Reactivity:	Mouse
Host:	Hamster
Isotype:	IgG
Clonality:	Monoclonal
Immunogen:	Activated mouse Th1 clone D1.6 (Ref.1)
Specificity:	This antibody is specific to CD154 (CD40 ligand/gp39), Mr 39-kDa.
Formulation:	PBS containing 0.09% Sodium Azide as preservative. Label: FITC State: Liquid purified Ig fraction. Label: Fluorescein Isothiocyanate Isomer 1
Concentration:	lot specific
Conjugation:	FITC
Storage:	Store the antibody undiluted at 2-8°C for one month or (in aliquots) at -20°C for longer. This product is photosensitive and should be protected from light. Avoid repeated freezing and thawing.
Stability:	Shelf life: one year from despatch.
Gene Name:	CD40 ligand
Database Link:	Entrez Gene 21947 Mouse P27548



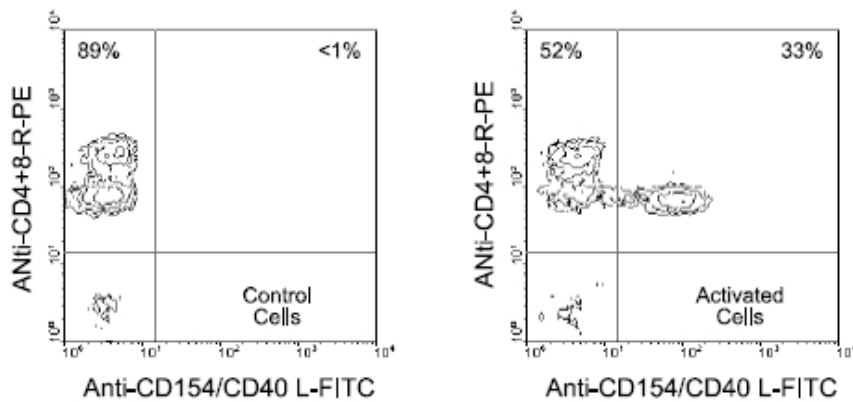
[View online »](#)

Background:

CD154, formerly known as CD40 ligand and gp39, is a type II integral membrane protein and a member of the tumor necrosis factor (TNF) family of ligands. (Ref.1-7) It is an important accessory molecule in T cell-B cell costimulatory interactions, and is expressed predominantly on activated CD4+ T lymphocytes. It is also present on the surface of activated Th0, Th1, and Th2 T cell clones. Its expression is transient and cyclosporinsensitive. (Ref.6) The MR1 monoclonal antibody binds to murine CD154 with high affinity, blocks binding to CD40, and blocks CD154 function. (Ref.1,5) Administration of this antibody to mice blocks the ability to mount primary and secondary immune responses to TD antigens, yet does not alter the immune response to TI antigens. (Ref.4)

Synonyms:

CD40 ligand, CD40-L, CD40LG, TNFSF5, TRAP, GP39

Product images:


Immunofluoscent Staining: Partially purified spleen T cells from BALB/c mice were incubated with either Hamster IgG or plate-bound Hamster anti-Mouse CD3e (clone 145-2C11) for 7 hours at 37°C. The cells were then harvested, double-stained with anti-CD154/CD40L-FITC and anti-CD4+8-PE, and analyzed by flow cytometry. Amount Used: 2 ug/10e6 cells.