

Product datasheet for **AM08039FC-N**

Tnfrsf8 Hamster Monoclonal Antibody [Clone ID: mCD30.1]

Product data:

Product Type:	Primary Antibodies
Clone Name:	mCD30.1
Applications:	FC
Recommended Dilution:	Flow Cytometry: < / 3 µg/10e6 cells. (Ref.1)
Reactivity:	Mouse
Host:	Hamster
Isotype:	IgG
Clonality:	Monoclonal
Immunogen:	Recombinant mouse CD30 extracellular domain-mouse IgG1 fusion protein. (Ref.1)
Specificity:	This antibody is specific to Murine CD30, Mr 52 kDa (core peptide).
Formulation:	PBS containing 0.09% Sodium Azide as preservative. Label: FITC State: Liquid purified Ig fraction. Label: Fluorescein Isothiocyanate Isomer 1
Concentration:	lot specific
Conjugation:	FITC
Storage:	Store the antibody undiluted at 2-8°C for one month or (in aliquots) at -20°C for longer. This product is photosensitive and should be protected from light. Avoid repeated freezing and thawing.
Stability:	Shelf life: one year from despatch.
Gene Name:	tumor necrosis factor receptor superfamily, member 8
Database Link:	Entrez Gene 21941 Mouse Q60846



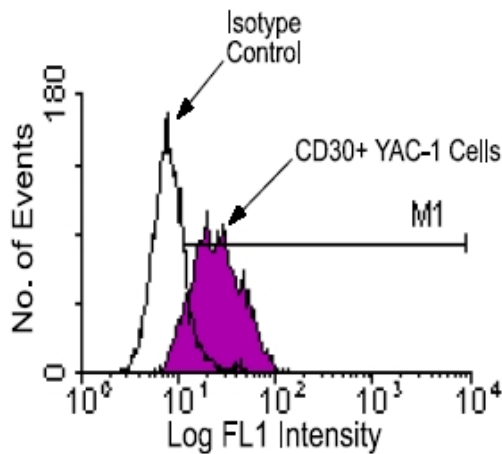
[View online »](#)

Background:

CD30 is a type I transmembrane protein and a member of the tumor necrosis factor receptor superfamily of proteins. (Ref.1,2) Murine CD30 is expressed predominantly in the thymus, and it is inducible in mouse splenocytes stimulated with pokeweed mitogen or concanavalin A. (Ref.1) In anti-CD3e-activated spleen cells, CD30 is expressed primarily on the surface of CD8+ T cells with peak expression on days 4 and 5. Stimulation of CD30+ CTL lines with plate-bound anti-CD30 directly signals IL-5 but not IFN-gamma production. (Ref.1) While these studies demonstrate that CD30 directs cytokine secretion and suggest that CD30 may play a pivotal role in the pattern of cytokine production by T cells, the precise roles of CD30 and its ligand (CD153) in T-cell development have not been clearly defined.

Synonyms:

TNFRSF8, D1S166E, CD30L receptor, KI-1 antigen

Product images:

Immunofluorescent Staining: The YAC-1 cell line was stained with hamster antimouse CD30-FITC. Large cells were gated and analyzed by flow cytometry. Amount Used: 3 ug/10e6 cells.