

## Product datasheet for **AM08033RP-N**

### Cd22 Rat Monoclonal Antibody [Clone ID: 2D6]

#### Product data:

Product Type:	Primary Antibodies
Clone Name:	2D6
Applications:	FC
Recommended Dilution:	<b>Flow Cytometry:</b> < / = 0.2 µg/10e6 cells. (Ref.2)
Reactivity:	Mouse
Host:	Rat
Isotype:	IgG1
Clonality:	Monoclonal
Specificity:	This antibody is specific to CD22 (Mr 150 kDa), a B Lymphocyte Adhesion Molecule.
Formulation:	PBS containing 0.09% Sodium Azide as preservative and a stabilizing agent. Label: PE State: Liquid purified Ig fraction. Label: R-Phycoerythrin
Concentration:	lot specific
Conjugation:	PE
Storage:	Store the antibody undiluted at 2-8°C. <b>DO NOT FREEZE!</b> This product is photosensitive and should be protected from light. Avoid repeated freezing and thawing.
Stability:	Shelf life: one year from despatch.
Gene Name:	CD22 antigen
Database Link:	<a href="#">Entrez Gene 12483 Mouse P35329</a>



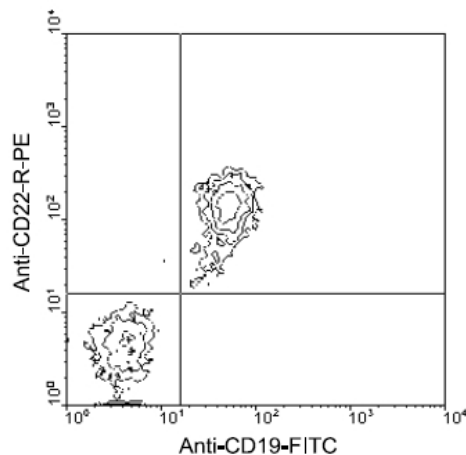
[View online »](#)

**Background:**

CD22, also known as Lyb-8, is a heterodimeric transmembrane glycoprotein and a member of a structurally related group of immunoglobulin (Ig) superfamily domain-containing proteins called the sialoadhesin family. It is detected in the cytoplasm early in B cell development (late pro-B cell stage), appears on the cell surface concomitant with IgD, and is found on most IgM+IgD+ mature B lymphocytes. Expression is lost with terminal differentiation of B cells and is absent on plasma cells. Activation of B cells via cross-linking of surface Ig increases CD22 expression. (Ref.1,2) CD22 associates with the B cell receptor (BCR) complex and mediates intercellular adhesion. (Ref.2-4) Its intracellular domain is phosphorylated after antigen receptor crosslinking and is involved in negative regulation of B-cell activation. (Ref.6-9)

**Synonyms:**

SIGLEC2, Siglec-2, B-cell receptor CD22, Leu-14, BL-CAM

**Product images:**

Immunofluorescent Staining: BALB/c splenocytes were double-stained with Rat anti-Mouse CD22-R-PE and Rat anti-Mouse CD19-FITC (Clone 6D5). Small lymphocytes were gated and analyzed on a FACScan (TM) flow cytometer (BDIS, San Jose, CA). Amount Used: 0.3 ug/10e6 cells.