

## Product datasheet for **AM08026FC-S**

### Cd3e Rat Monoclonal Antibody [Clone ID: C363.29B (YCD3-1)]

#### Product data:

Product Type:	Primary Antibodies
Clone Name:	C363.29B (YCD3-1)
Applications:	FC, FN, IHC, IP
Recommended Dilution:	<b>Flow Cytometry:</b> Identification and enumeration of CD3+ ( $\leq 3 \mu\text{g}/10^6$ cells) (See also Ref.1,2).
Reactivity:	Mouse
Host:	Rat
Isotype:	IgG2b
Clonality:	Monoclonal
Immunogen:	IL-4 producing Th2 cell lines including D10
Specificity:	This antibody is specific to CD3e (Mr. 25 kD).
Formulation:	PBS containing 0.09% Sodium Azide as preservative Label: FITC State: Liquid purified Ig fraction Label: Fluorescein Isothiocyanate Isomer 1
Concentration:	lot specific
Conjugation:	FITC
Storage:	Store the antibody undiluted at 2-8°C for one month or (in aliquots) at -20°C for longer. This product is photosensitive and should be protected from light. Avoid repeated freezing and thawing.
Stability:	Shelf life: one year from despatch.
Gene Name:	CD3 antigen, epsilon polypeptide
Database Link:	<a href="#">Entrez Gene 12501 Mouse P22646</a>



[View online »](#)

**Background:**

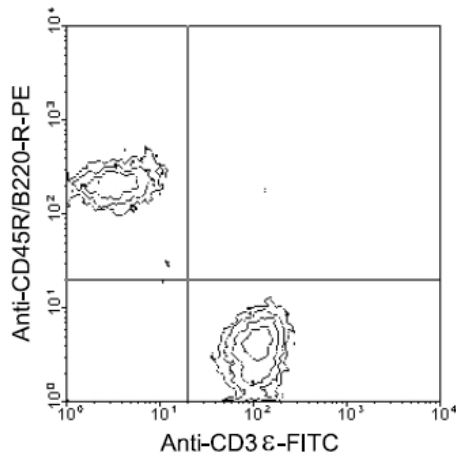
CD3e, a member of the immunoglobulin superfamily of cell surface receptors, is comprised of five invariable chain ranging in size from 16-28 kDa and is closely associated with the T cell antigen receptor (TCR). It is expressed on all T cells of all mouse strains. (Ref.1,2)

CD3 plays a major role in signaling during antigen recognition, leading to T-cell activation. The monoclonal antibody C363.29B recognizes an epitope on the 25kD epsilon chain of the CD3/TCR complex. (Ref.1) In the presence of Fc receptor-bearing accessory cells, soluble C363.29B can activate primed and naïve T cell in vitro. Immobilized C363.29 monoclonal antibody can also activate both normal T lymphocytes and cloned T cell lines provided the appropriate accessory signals are present. (Ref.1,3,4)

The monoclonal antibody is cytolytic, easily used for cell surface staining and a good immunoprecipitating antibody. (Ref.1)

**Synonyms:**

T3/Leu-4

**Product images:**

Immunofluorescent Staining: Cells from BALB/c mesenteric lymph nodes were double-stained with anti-Mouse CD3e-FITC and anti-Mouse CD45R/B220-R-PE (clone RA3-6B2), gated on small lymphocytes and analyzed using a FACScan (TM) flow cytometer (BDIS, San Jose, CA). Amount used: < / = 3 ug/10e6.