

Product datasheet for **AM08025FC-S**

Cd2 Rat Monoclonal Antibody [Clone ID: 12-15]

Product data:

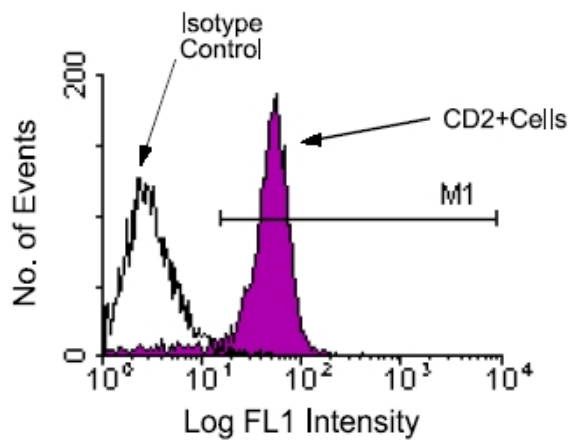
| | |
|-----------------------|--|
| Product Type: | Primary Antibodies |
| Clone Name: | 12-15 |
| Applications: | FC |
| Recommended Dilution: | Flow Cytometry < / = 1 µg/10e6 cells. (Ref.1-3) |
| Reactivity: | Mouse |
| Host: | Rat |
| Isotype: | IgG1 |
| Clonality: | Monoclonal |
| Specificity: | This antibody is specific to CD2/LFA-2 (Mr 45-58 kDa) |
| Formulation: | PBS containing 0.09% Sodium Azide as preservative. Label: FITC State: Liquid purified Ig fraction. Label: Fluorescein Isothiocyanate Isomer 1 |
| Concentration: | lot specific |
| Conjugation: | FITC |
| Storage: | Store the antibody undiluted at 2-8°C for one month or (in aliquots) at -20°C for longer. This product is photosensitive and should be protected from light. Avoid repeated freezing and thawing. |
| Stability: | Shelf life: one year from despatch. |
| Gene Name: | CD2 antigen |
| Database Link: | Entrez Gene 12481 Mouse P08920 |
| Background: | CD2, also known as leukocyte function-associated antigen-2 (LFA-2), is a member of the immunoglobulin superfamily of cell adhesion molecules. (Ref.1) It is expressed on the surface of >95% of thymocytes, and essentially all B cells, T cells and NK cells. (Ref.1-3) In the mouse, CD2 is the receptor for CD48. (Ref.4) CD2 is thought to play a major role in mediating T-cell adhesion, T-cell recognition/activation, T-cell signaling and intrathymic differentiation. (Ref.5-10) |



[View online »](#)

Synonyms: SRBC, Erythrocyte receptor, LFA-2, LFA-3 receptor, Rosette receptor

Product images:



Immunofluorescent Staining: BALB/c lymph node cells were stained with Rat anti-Mouse CD2-FITC (Cat#AM08025FC). Lymphocytes were then gated and analyzed by flow cytometry. Amount Used: 1 ug/10e6 cells.