

Product datasheet for **AM08025FC-N**

Cd2 Rat Monoclonal Antibody [Clone ID: 12-15]

Product data:

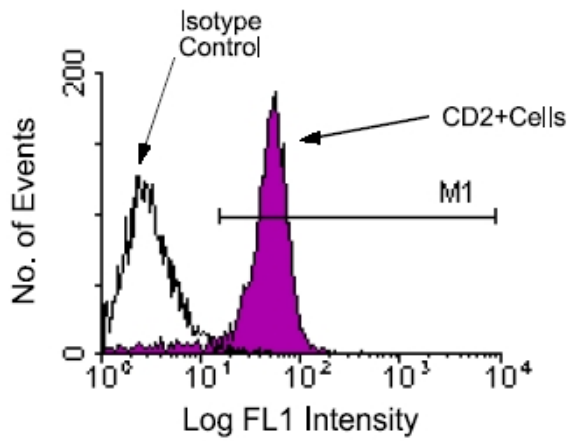
Product Type:	Primary Antibodies
Clone Name:	12-15
Applications:	FC
Recommended Dilution:	Flow Cytometry < / = 1 µg/10e6 cells. (Ref.1-3)
Reactivity:	Mouse
Host:	Rat
Isotype:	IgG1
Clonality:	Monoclonal
Specificity:	This antibody is specific to CD2/LFA-2 (Mr 45-58 kDa)
Formulation:	PBS containing 0.09% Sodium Azide as preservative. Label: FITC State: Liquid purified Ig fraction. Label: Fluorescein Isothiocyanate Isomer 1
Concentration:	lot specific
Conjugation:	FITC
Storage:	Store the antibody undiluted at 2-8°C for one month or (in aliquots) at -20°C for longer. This product is photosensitive and should be protected from light. Avoid repeated freezing and thawing.
Stability:	Shelf life: one year from despatch.
Gene Name:	CD2 antigen
Database Link:	Entrez Gene 12481 Mouse P08920
Background:	CD2, also known as leukocyte function-associated antigen-2 (LFA-2), is a member of the immunoglobulin superfamily of cell adhesion molecules. (Ref.1) It is expressed on the surface of >95% of thymocytes, and essentially all B cells, T cells and NK cells. (Ref.1-3) In the mouse, CD2 is the receptor for CD48. (Ref.4) CD2 is thought to play a major role in mediating T-cell adhesion, T-cell recognition/activation, T-cell signaling and intrathymic differentiation. (Ref.5-10)



[View online »](#)

Synonyms: SRBC, Erythrocyte receptor, LFA-2, LFA-3 receptor, Rosette receptor

Product images:



Immunofluorescent Staining: BALB/c lymph node cells were stained with Rat anti-Mouse CD2-FITC (Cat#AM08025FC). Lymphocytes were then gated and analyzed by flow cytometry. Amount Used: 1 ug/10e6 cells.