

Product datasheet for **AM08021RP-S**

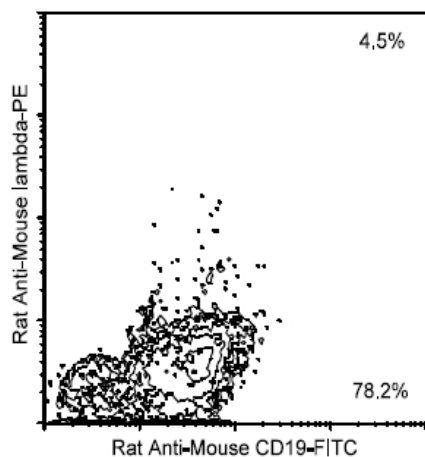
Mouse lambda light chain Rat Monoclonal Antibody [Clone ID: JC5-1]

Product data:

Product Type:	Primary Antibodies
Clone Name:	JC5-1
Applications:	FC, IF
Recommended Dilution:	Flow Cytometry: < / = 0.2 µg/10e6 cells. Identification and enumeration of Lambda+ cells. Immunofluorescence Microscopy: Identification and enumeration of Lambda+ cells. FLISA: < / = 1.0 µg/ml
Reactivity:	Mouse
Host:	Rat
Isotype:	IgG2b
Clonality:	Monoclonal
Specificity:	This antibody reacts with mouse Lambda 1 and Lambda 2 light chains. It does not react with other immunoglobulin isotypes or Kappa light chains.
Formulation:	PBS containing 0.09% Sodium Azide as preservative and a stabilizing agent. Label: PE State: Liquid purified Ig fraction. Label: R-Phycoerythrin
Concentration:	lot specific
Conjugation:	PE
Storage:	Store the antibody undiluted at 2-8°C. DO NOT FREEZE! This product is photosensitive and should be protected from light. Avoid repeated freezing and thawing.
Stability:	Shelf life: one year from despatch.



[View online »](#)

Product images:

Immunofluorescent Staining: BALB/c splenocytes were double-stained with Rat anti-Mouse Lambda-R-PE and Rat anti-Mouse CD19-FITC (Clone 6D5). Small lymphocytes were ten gated and analyzed using a FACScan (TM) flow cytometer (BDIS, San Jose, CA). Amount Used: