

Product datasheet for **AM08020RP-N**

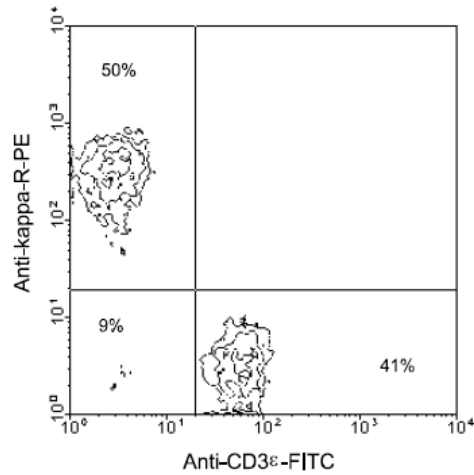
Mouse Kappa Light Chain Rat Monoclonal Antibody [Clone ID: H139-52.1]

Product data:

Product Type:	Primary Antibodies
Clone Name:	H139-52.1
Applications:	FC, IF
Recommended Dilution:	Flow Cytometry: < / = 0.2 µg/10e6 cells. Identification and enumeration of kappa+ cells. Immunofluorescence Microscopy: Identification and enumeration of kappa+ cells. FLISA:
Reactivity:	Mouse
Host:	Rat
Isotype:	IgG1
Clonality:	Monoclonal
Specificity:	This antibody reacts with Mouse kappa light chains.
Formulation:	PBS containing 0.09% Sodium Azide as preservative and a stabilizing agent. Label: PE State: Liquid purified Ig fraction. Label: R-Phycoerythrin
Conjugation:	PE
Storage:	Store the antibody undiluted at 2-8°C. DO NOT FREEZE! This product is photosensitive and should be protected from light. Avoid repeated freezing and thawing.
Stability:	Shelf life: one year from despatch.



[View online »](#)

Product images:

Immunofluorescent Staining: Cells from BALB/c spleen were double-stained with Rat anti-Mouse kappa-R-PE and Rat anti-Mouse CD3ε-FITC (Clone C363.29B), following which small lymphocytes were gated and analyzed using a FACScan (TM) flow cytometer (BDIS, San J