

## Product datasheet for **AM08019FC-N**

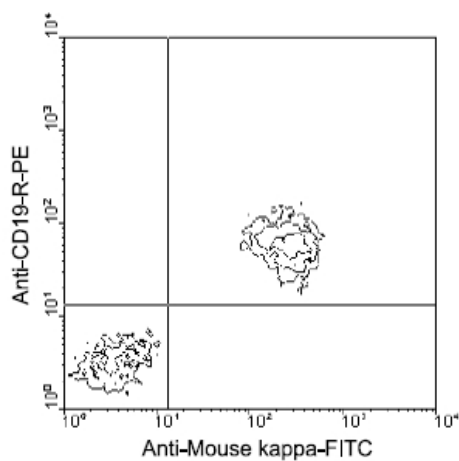
### Mouse Kappa Light Chain Rat Monoclonal Antibody [Clone ID: 187.1]

#### Product data:

Product Type:	Primary Antibodies
Clone Name:	187.1
Applications:	ELISA, FC, IF
Recommended Dilution:	<b>Flow Cytometry:</b> $< / = 1 \mu\text{g}/10\text{e}6$ cells. Identification and enumeration of kappa cells. <b>Immunofluorescence Microscopy:</b> Identification and enumeration of kappa cells. <b>ELISA.</b>
Reactivity:	Mouse
Host:	Rat
Isotype:	IgG1
Clonality:	Monoclonal
Specificity:	This antibody reacts with Mouse kappa light chains. Does not react with other immunoglobulin isotypes or lambda light chains.
Formulation:	PBS containing 0.09% Sodium Azide as preservative. Label: FITC State: Liquid purified Ig fraction. Label: Fluorescein Isothiocyanate Isomer 1
Concentration:	lot specific
Conjugation:	FITC
Storage:	Store the antibody undiluted at 2-8°C for one month or (in aliquots) at -20°C for longer. This product is photosensitive and should be protected from light. Avoid repeated freezing and thawing.
Stability:	Shelf life: one year from despatch.



[View online »](#)

**Product images:**

Immunofluorescent Staining: BALB/c splenocytes were double-stained with rat anti-Mouse Kappa-FITC and rat anti-mouse CD19-R-PE (Clone 6D5). Small lymphocytes were then gated and analyzed using a FACScan (TM) flow cytometer (BDIS, San Jose, CA). Amount Used: