

Product datasheet for **AM08017FC-N**

Mouse IgG2a (gamma 2a chain specific) Rat Monoclonal Antibody [Clone ID: SB84a]

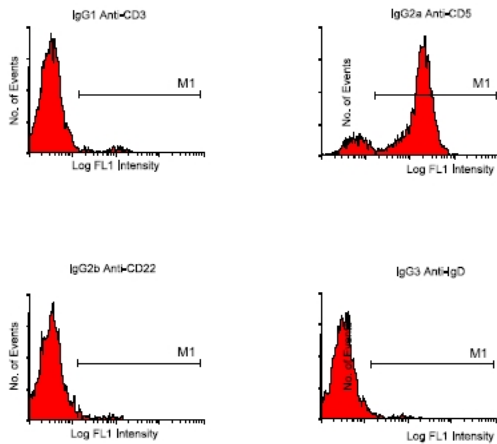
Product data:

| | |
|-----------------------|--|
| Product Type: | Secondary Antibodies |
| Product Name: | Mouse IgG2a (gamma 2a chain specific) Rat Monoclonal Antibody [Clone ID: SB84a] |
| Clone Name: | SB84a |
| Applications: | FC, IF |
| Recommended Dilution: | FLISA: 1/200-1/400. Flow Cytometry: $\leq 1 \mu\text{g}/10^6$ cells. Identification and enumeration of IgG2a+ cells. Immunofluorescence Microscopy: Identification and enumeration of IgG2a+ cells. Also used as a second step reagent for mouse IgG2a monoclonal antibodies. |
| Reactivity: | Mouse |
| Host: | Rat |
| Isotype: | IgG1 |
| Formulation: | PBS containing 0.09% Sodium Azide as preservative Label: FITC State: Liquid purified IgG fraction Label: Fluorescein Isothiocyanate Isomer 1 |
| Concentration: | lot specific |
| Conjugation: | FITC |
| Storage: | Store undiluted at 2-8°C for one month or (in aliquots) at -20°C for longer. This product is photosensitive and should be protected from light. Avoid repeated freezing and thawing. |



[View online »](#)

Product images:



Immunofluorescent Staining: Human PBMC were incubated with either mouse IgG1 anti-CD3, mouse IgG2a anti-CD5, mouse IgG2b anti-CD22, or mouse IgG3 anti-IgD. After washing, the cells were then incubated with FITC-labeled rat anti-mouse IgG1. Small lymphocytes were gated and analyzed on a FACScan(TM) flow cytometer (BDIS, San Jose, CA). Amount Used: 1 μ g/10e6 cells.