

Product datasheet for **AM08012FC-N**

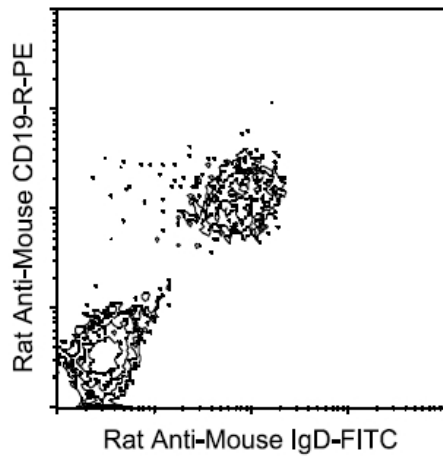
Mouse IgD (Delta heavy chain) Rat Monoclonal Antibody [Clone ID: 11-26]

Product data:

| | |
|-----------------------|---|
| Product Type: | Secondary Antibodies |
| Product Name: | Mouse IgD (Delta heavy chain) Rat Monoclonal Antibody [Clone ID: 11-26] |
| Clone Name: | 11-26 |
| Applications: | FC, IF |
| Recommended Dilution: | Flow Cytometry: < / = 1 µg/10e6 cells. (See Ref.1-5) Immunofluorescence. |
| Reactivity: | Mouse |
| Host: | Rat |
| Isotype: | IgG2a |
| Formulation: | PBS containing 0.09% Sodium Azide as preservative. Label: FITC State: Liquid purified Ig fraction. Label: Fluorescein Isothiocyanate Isomer 1 |
| Concentration: | lot specific |
| Conjugation: | FITC |
| Storage: | Store the antibody undiluted at 2-8°C for one month or (in aliquots) at -20°C for longer. This product is photosensitive and should be protected from light. Avoid repeated freezing and thawing. |



[View online »](#)

Product images:

BALB/c splenocytes were double-stained with rat anti mouse IgD-FITC and rat anti-mouse CD19-R-PE Small lymphocytes were then gated and analyzed using a FACScan(TM) flow cytometer (BDIS, San Jose, CA).