

## Product datasheet for **AM06778PU-N**

### MELK Mouse Monoclonal Antibody [Clone ID: 2G2]

#### Product data:

Product Type:	Primary Antibodies
Clone Name:	2G2
Applications:	ELISA, FC, IF, IHC
Recommended Dilution:	<b>ELISA:</b> 1/10000. <b>Flow Cytometry:</b> 1/200-1/400. <b>Immunocytochemistry:</b> 1/200-1/1000. <b>Immunohistochemistry on Paraffin Sections:</b> 1/200-1/1000.
Reactivity:	Human
Host:	Mouse
Isotype:	IgG2a
Clonality:	Monoclonal
Immunogen:	Synthesized peptide of Human MELK (Amino acids 637-651)
Specificity:	This antibody recognizes Human MELK. Other species not tested.
Formulation:	PBS State: Purified State: Liquid purified IgG fraction Stabilizer: 0.5% protein stabilizer Preservative: 0.05% Sodium Azide
Concentration:	lot specific
Conjugation:	Unconjugated
Storage:	Store undiluted at 2-8°C for one month or (in aliquots) at -20°C for longer. Avoid repeated freezing and thawing.
Stability:	Shelf life: one year from despatch.
Predicted Protein Size:	74.6 kDa
Gene Name:	maternal embryonic leucine zipper kinase
Database Link:	<a href="#">Entrez Gene 9833 Human Q14680</a>

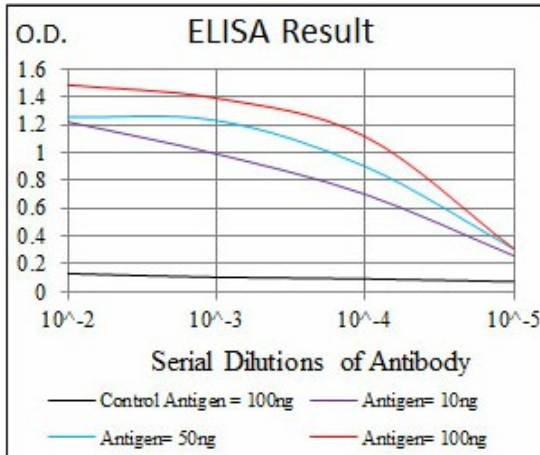


[View online »](#)

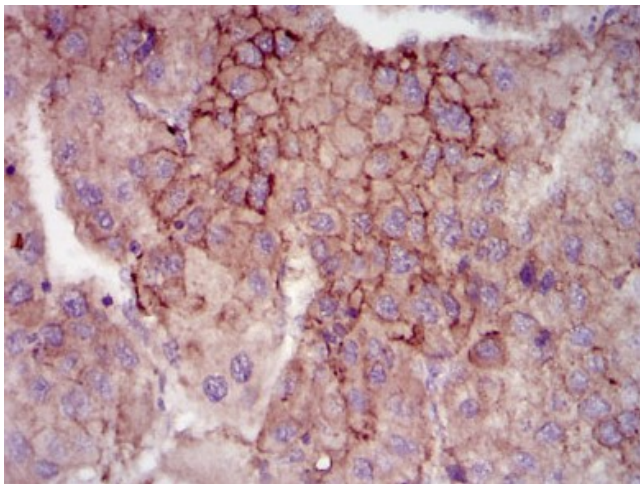
**Background:** Maternal embryonic leucine-zipper kinase (MELK) is a key regulator of survival of stemlike GBM cells in vitro. MELK expression is increased in breast cancer tissue and this increase is also associated with poor patient survival, as predicted for a candidate oncogene.

**Synonyms:** Maternal embryonic leucine zipper kinase, KIAA0175, hMELK

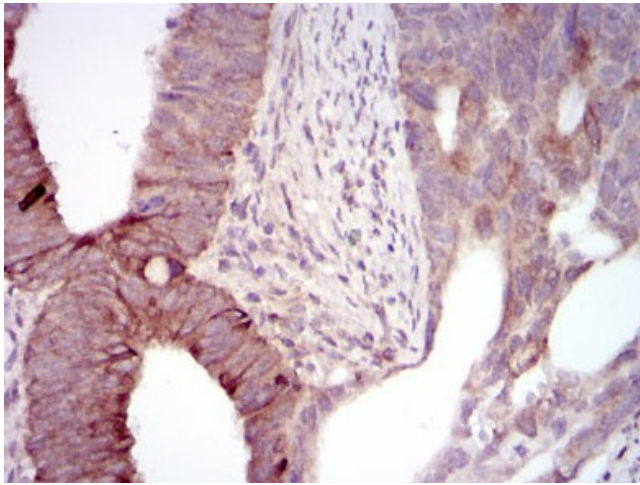
**Product images:**



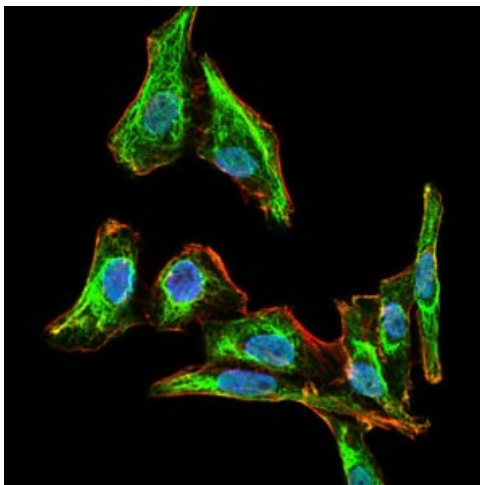
Red: Control Antigen (100ng); Purple: Antigen (10ng); Green: Antigen (50ng); Blue: Antigen (100ng);



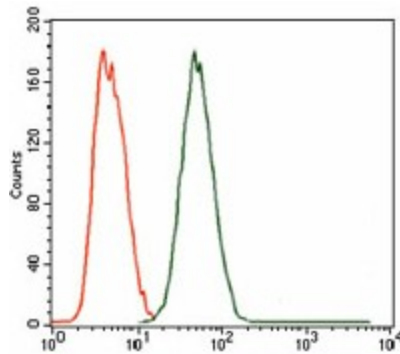
Immunohistochemical analysis of paraffin-embedded liver cancer tissues using MELK mouse mAb with DAB staining.



Immunohistochemical analysis of paraffin-embedded rectum cancer tissues using MELK mouse mAb with DAB staining.



Immunofluorescence analysis of HepG2 cells using MELK mouse mAb (green). Blue: DRAQ5 fluorescent DNA dye. Red: Actin filaments have been labeled with Alexa Fluor-555 phalloidin.



Flow cytometric analysis of MCF-7 cells using MELK mouse mAb (green) and negative control (red).