

## Product datasheet for **AM06777PU-N**

### **DLL4 Mouse Monoclonal Antibody [Clone ID: 4A11F8/4A11G2]**

#### **Product data:**

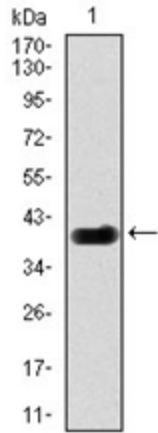
Product Type:	Primary Antibodies
Clone Name:	4A11F8/4A11G2
Applications:	ELISA, FC, WB
Recommended Dilution:	<b>ELISA:</b> 1/10000. <b>Western Blot:</b> 1/500 - 1/2000. <b>Flow Cytometry:</b> 1/200 - 1/400.
Reactivity:	Human
Host:	Mouse
Clonality:	Monoclonal
Immunogen:	Purified recombinant fragment of Human DLL4 expressed in E. Coli.
Specificity:	This antibody recognizes DLL4.
Formulation:	PBS State: Purified State: Liquid purified IgG fraction Stabilizer: 0.5% protein stabilizer Preservative: 0.05% Sodium Azide
Concentration:	lot specific
Conjugation:	Unconjugated
Storage:	Store the antibody undiluted at 2-8°C for one month or (in aliquots) at -20°C for longer. Avoid repeated freezing and thawing.
Stability:	Shelf life: one year from despatch.
Predicted Protein Size:	74.6 kDa
Gene Name:	delta like canonical Notch ligand 4
Database Link:	<a href="#">Entrez Gene 54567 Human Q9NR61</a>
Background:	This gene is a homolog of the Drosophila delta gene. The delta gene family encodes Notch ligands that are characterized by a DSL domain, EGF repeats, and a transmembrane domain.
Synonyms:	Delta 4, Drosophila Delta homolog 4



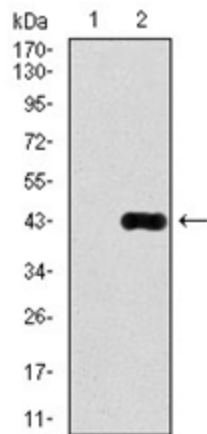
[View online »](#)

Note: **Host/Isotype:** 4A11F8 Mouse IgG2b/4A11G2 Mouse IgG1

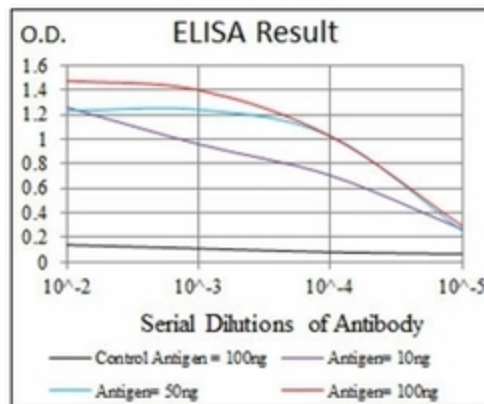
**Product images:**

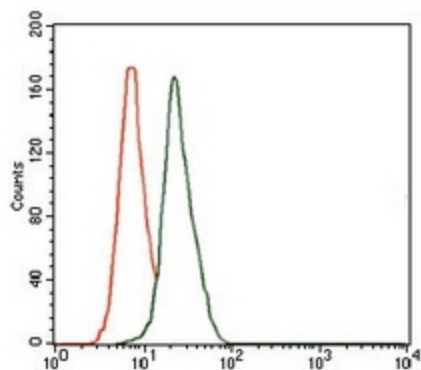


Western blot analysis using DLL4 antibody against human DLL4 (AA: 313-439) recombinant protein (Expected MW is 39.2 kDa)



Western blot analysis using DLL4 antibody against HEK293 (1) and DLL4 (AA: 313-439)-hlgGfC transfected HEK293 (2) cell lysate.





Flow Cytometric analysis of HeLa cells using DLL4 antibody (green) and negative control (red).