

## Product datasheet for **AM06775SU-N**

### Prostate Specific Antigen (KLK3) Mouse Monoclonal Antibody [Clone ID: 8A12]

#### Product data:

Product Type:	Primary Antibodies
Clone Name:	8A12
Applications:	ELISA, FC, WB
Recommended Dilution:	<b>ELISA:</b> 1/10000. <b>Western Blot:</b> 1/500-1/2000. <b>Flow Cytometry:</b> 1/200-1/400.
Reactivity:	Human
Host:	Mouse
Isotype:	IgG
Clonality:	Monoclonal
Immunogen:	Purified recombinant fragment of human KLK3 expressed in E. Coli.
Specificity:	This antibody reacts to KLK3.
Formulation:	State: Ascites State: Ascitic fluid containing 0.03% sodium azide.
Conjugation:	Unconjugated
Storage:	Store the antibody undiluted at 2-8°C for one month or (in aliquots) at -20°C for longer. Avoid repeated freezing and thawing.
Stability:	Shelf life: one year from despatch.
Gene Name:	kallikrein related peptidase 3
Database Link:	<a href="#">Entrez Gene 354 Human P07288</a>



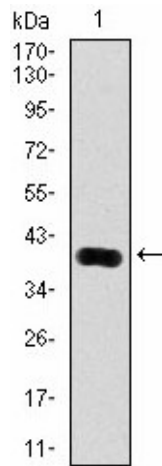
[View online »](#)

**Background:**

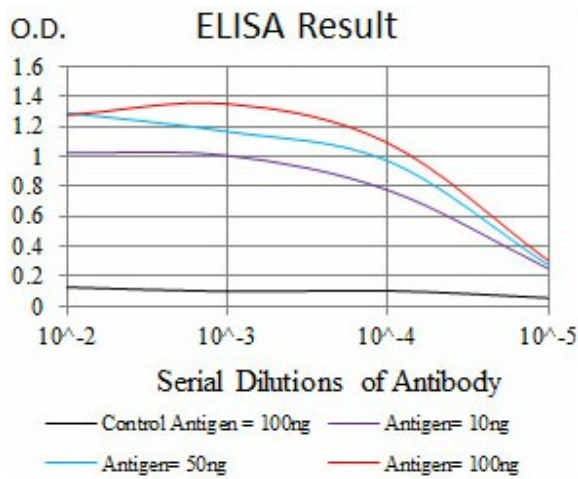
Kallikreins are a subgroup of serine proteases having diverse physiological functions. Growing evidence suggests that many kallikreins are implicated in carcinogenesis and some have potential as novel cancer and other disease biomarkers. This gene is one of the fifteen kallikrein subfamily members located in a cluster on chromosome 19. Its protein product is a protease present in seminal plasma. It is thought to function normally in the liquefaction of seminal coagulum, presumably by hydrolysis of the high molecular mass seminal vesicle protein. Serum level of this protein, called PSA in the clinical setting, is useful in the diagnosis and monitoring of prostatic carcinoma. Alternate splicing of this gene generates several transcript variants encoding different isoforms.

**Synonyms:**

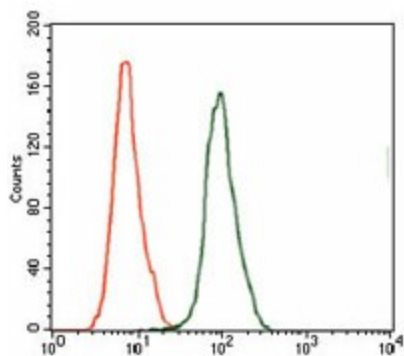
Prostate-specific antigen, Semenogelase, Gamma-seminoprotein, P-30 antigen

**Product images:**


Western blot analysis using KLK3 mAb against human KLK3 (AA: 109-216) recombinant protein. (Expected MW is 37.2 kDa)



Red: Control Antigen (100ng); Purple: Antigen (10ng); Green: Antigen (50ng); Blue: Antigen (100ng);



Flow cytometric analysis of HeLa cells using KLK3 mouse mAb (green) and negative control (red).