

Product datasheet for **AM06771PU-N**

Nkx2.2 (NKX2-2) Mouse Monoclonal Antibody [Clone ID: 3E4]

Product data:

Product Type:	Primary Antibodies
Clone Name:	3E4
Applications:	ELISA, FC, WB
Recommended Dilution:	ELISA: 1/10000. Western Blot: 1/500 - 1/2000. Flow Cytometry: 1/200 - 1/400.
Reactivity:	Human
Host:	Mouse
Isotype:	IgG1
Clonality:	Monoclonal
Immunogen:	Purified recombinant fragment of human NKX2.2 expressed in E. Coli.
Specificity:	Recognizes NKX2.2
Formulation:	PBS State: Purified State: Liquid purified IgG fraction Stabilizer: 0.5% protein stabilizer Preservative: 0.05% Sodium Azide
Concentration:	lot specific
Conjugation:	Unconjugated
Storage:	Store the antibody undiluted at 2-8°C for one month or (in aliquots) at -20°C for longer. Avoid repeated freezing and thawing.
Stability:	Shelf life: one year from despatch.
Predicted Protein Size:	30.1 kDa
Gene Name:	NK2 homeobox 2
Database Link:	Entrez Gene 4821 Human O95096



[View online »](#)

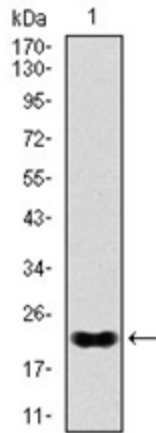
Background:

The protein encoded by this gene contains a homeobox domain and may be involved in the morphogenesis of the central nervous system. This gene is found on chromosome 20 near NKX2-4, and these two genes appear to be duplicated on chromosome 14 in the form of TITF1 and NKX2-8. The encoded protein is likely to be a nuclear transcription factor.

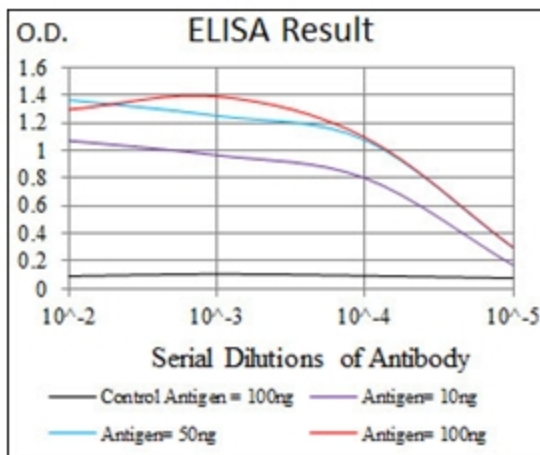
Synonyms:

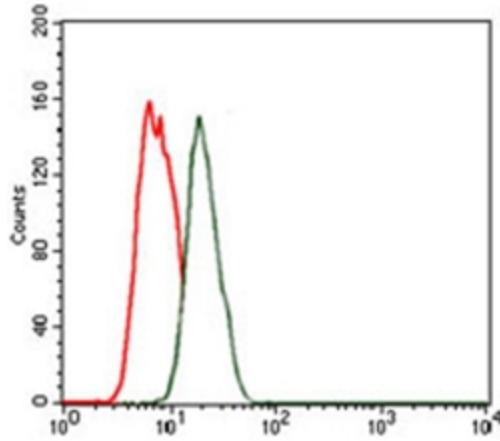
NKX2.2, NKX2B

Product images:



Western blot analysis using NKX2.2 antibody against human NKX2.2 recombinant protein (Expected MW is 22 kDa)





Flow cytometric analysis of MCF-7 cells using NKX2.2 antibody (green) and negative control (red).