

Product datasheet for **AM06768PU-N**

Bpifb1 Mouse Monoclonal Antibody [Clone ID: 4H2]

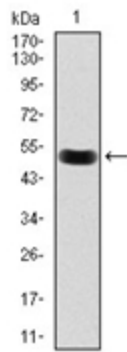
Product data:

Product Type:	Primary Antibodies
Clone Name:	4H2
Applications:	ELISA, FC, IF, IHC, WB
Recommended Dilution:	ELISA: 1/10000. Western Blot: 1/500 - 1/2000. Flow Cytometry: 1/200 - 1/400. Immunofluorescence: 1/200 - 1/1000 Immunohistochemistry on Paraffin Sections: 1/200 - 1/1000.
Reactivity:	Human, Mouse
Host:	Mouse
Isotype:	IgG1
Clonality:	Monoclonal
Immunogen:	Purified recombinant fragment of Mouse Lplunc1 expressed in E. Coli.
Formulation:	PBS containing 0.05% Sodium Azide and 0.5% protein stabilizer State: Purified State: Liquid purified IgG fraction
Concentration:	lot specific
Conjugation:	Unconjugated
Storage:	Store the antibody undiluted at 2-8°C for one month or (in aliquots) at -20°C for longer. Avoid repeated freezing and thawing.
Stability:	Shelf life: one year from despatch.
Predicted Protein Size:	52.4 kDa
Gene Name:	BPI fold containing family B, member 1
Database Link:	Entrez Gene 228801 Mouse Q61114
Synonyms:	C20orf114, VEMSGP

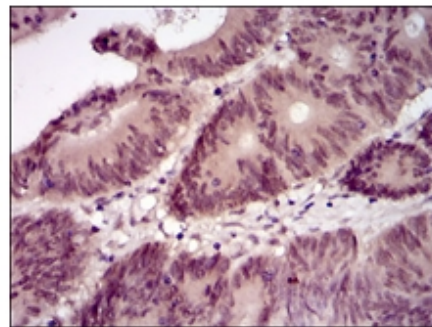
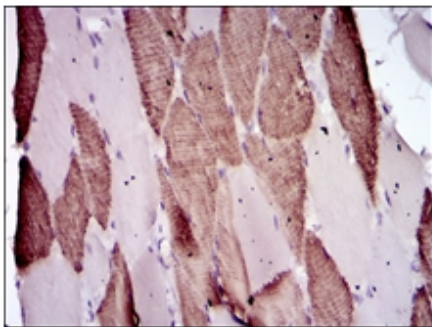
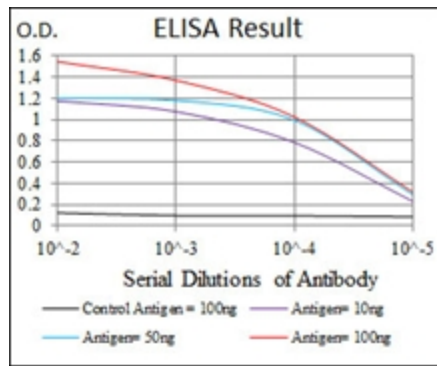


[View online »](#)

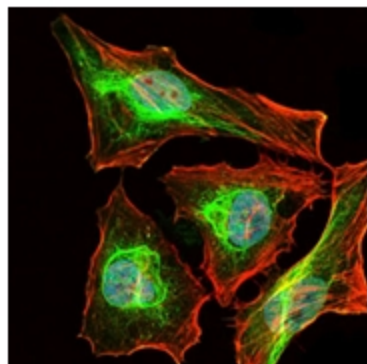
Product images:



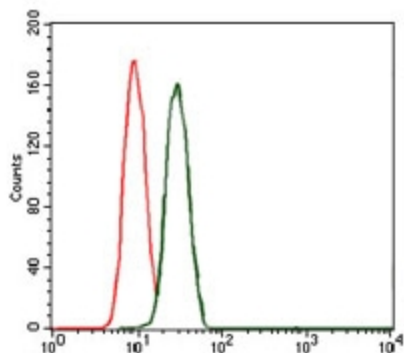
Western blot analysis using Lplunc1 antibody against mouse Lplunc1 (AA: 248-475) recombinant protein (Expected MW is 50.8 kDa)



Immunohistochemical analysis of paraffin-embedded muscle tissues (Left) and colon cancer tissues (Right) using Lplunc1 antibody with DAB staining.



Immunofluorescence analysis of HeLa cells using Lplunc1 antibody (green). Blue: DRAQ5 fluorescent DNA dye. Red: Actin filaments have been labeled with Alexa Fluor-555 phalloidin.



Flow Cytometric analysis of MCF-7 cells using Lplunc1 antibody (green) and negative control (red).