

Product datasheet for **AM06767SU-N**

LC3B (MAP1LC3B) Mouse Monoclonal Antibody [Clone ID: 5H12]

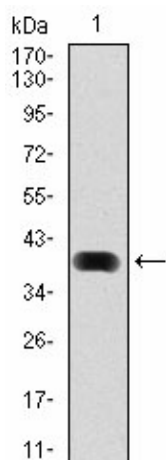
Product data:

Product Type:	Primary Antibodies
Clone Name:	5H12
Applications:	ELISA, FC, WB
Recommended Dilution:	Western Blot: 1/500 - 1/2000. Flow cytometry: 1/200 - 1/400. ELISA: 1/10000.
Reactivity:	Human
Host:	Mouse
Isotype:	IgG1
Clonality:	Monoclonal
Immunogen:	Purified recombinant fragment of human MAP1LC3B expressed in E. Coli.
Specificity:	This antibody reacts to MAP1LC3B.
Formulation:	State: Ascites State: Ascitic fluid containing 0.03% sodium azide.
Conjugation:	Unconjugated
Storage:	Store the antibody undiluted at 2-8°C for one month or (in aliquots) at -20°C for longer. Avoid repeated freezing and thawing.
Stability:	Shelf life: one year from despatch.
Predicted Protein Size:	14,6 kDa
Gene Name:	microtubule associated protein 1 light chain 3 beta
Database Link:	Entrez Gene 81631 Human Q9GZQ8
Background:	The product of this gene is a subunit of neuronal microtubule-associated MAP1A and MAP1B proteins, which are involved in microtubule assembly and important for neurogenesis. Studies on the rat homolog implicate a role for this gene in autophagy, a process that involves the bulk degradation of cytoplasmic component.
Synonyms:	MAP1LC3B, MAP1A/MAP1B, Map1lc3b, Map1alc3, Map1lc3

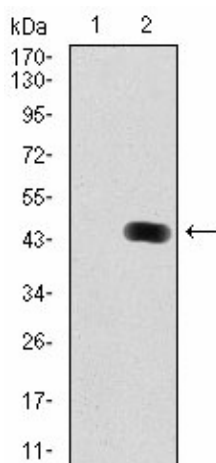


[View online »](#)

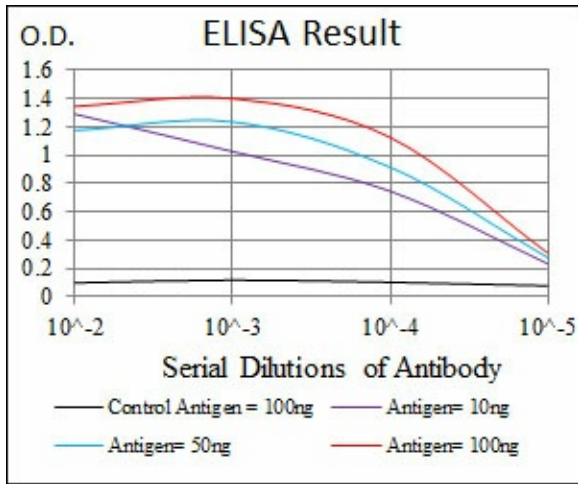
Product images:



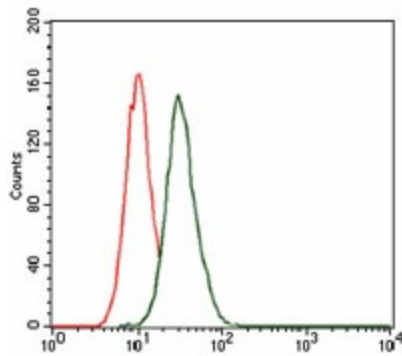
Western blot analysis using MAP1LC3B mAb against human MAP1LC3B (AA: 1-125) recombinant protein. (Expected MW is 40.2 kDa)



Western blot analysis using MAP1LC3B mAb against HEK293 (1) and MAP1LC3B (AA: 1-125)-hlgGfC transfected HEK293 (2) cell lysate



Red: Control Antigen (100ng) Purple: Antigen (10ng) Green: Antigen (50ng) Blue: Antigen (100ng)



Flow cytometric analysis of HeLa cells using MAP1LC3B mouse mAb (green) and negative control (red).