

Product datasheet for **AM06766PU-N**

Nck (NCK1) Mouse Monoclonal Antibody [Clone ID: 5B7]

Product data:

Product Type:	Primary Antibodies
Clone Name:	5B7
Applications:	ELISA, FC, IHC, WB
Recommended Dilution:	ELISA: 1/10000. Western Blot: 1/500 - 1/2000. Flow Cytometry: 1/200 - 1/400. Immunohistochemistry on Paraffin Sections: 1/200 - 1/1000.
Reactivity:	Human, Monkey
Host:	Mouse
Isotype:	IgG1
Clonality:	Monoclonal
Immunogen:	Purified recombinant fragment of Human NCK1 expressed in E. Coli.
Specificity:	Recognizes NCK1
Formulation:	PBS State: Purified State: Liquid purified IgG fraction Stabilizer: 0.5% protein stabilizer Preservative: 0.05% Sodium Azide
Concentration:	lot specific
Conjugation:	Unconjugated
Storage:	Store the antibody undiluted at 2-8°C for one month or (in aliquots) at -20°C for longer. Avoid repeated freezing and thawing.
Stability:	Shelf life: one year from despatch.
Predicted Protein Size:	47 kDa
Gene Name:	NCK adaptor protein 1
Database Link:	Entrez Gene 4690 Human P16333



[View online »](#)

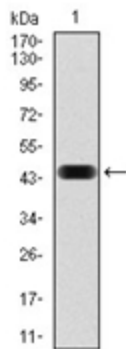
Background:

The protein encoded by this gene is one of the signaling and transforming proteins containing Src homology 2 and 3 (SH2 and SH3) domains. It is located in the cytoplasm and is an adaptor protein involved in transducing signals from receptor tyrosine kinases to downstream signal recipients such as RAS. Alternatively spliced transcript variants encoding different isoforms have been found.

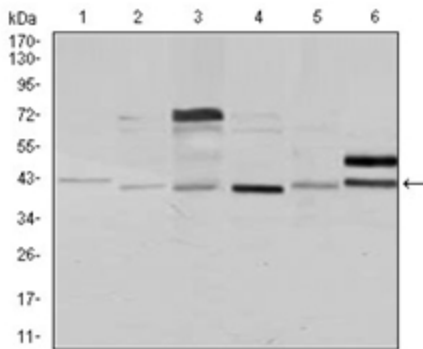
Synonyms:

Cytoplasmic protein NCK1, NCK, NCK adaptor protein 1

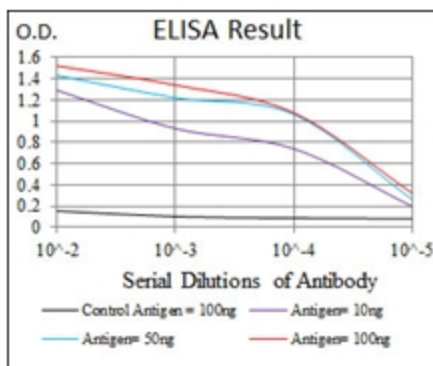
Product images:

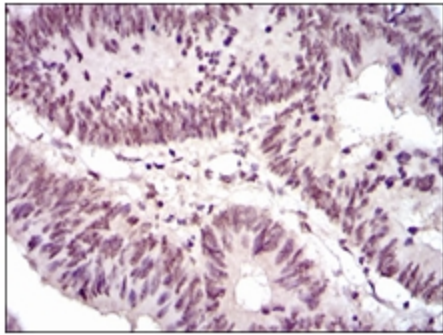


Western blot analysis using NCK1 mAb against human NCK1 (AA: 203-371) recombinant protein (Expected MW is 44.9 kDa)

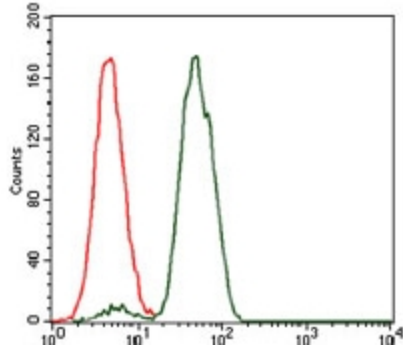


Western blot analysis using NCK1 mouse mAb against Jurkat (1), HeLa (2), HEK293 (3), A431 (4), K562 (5), and COS7 (6) cell lysate.





Immunohistochemical analysis of paraffin-embedded rectum cancer tissues using NCK1 mouse mAb with DAB staining.



Flow cytometric analysis of Jurkat cells using NCK1 mouse mAb (green) and negative control (red).