

## Product datasheet for **AM06764SU-N**

### C Reactive Protein (CRP) Mouse Monoclonal Antibody [Clone ID: 1G1]

#### Product data:

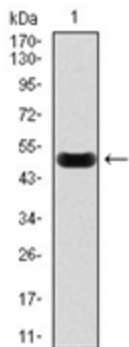
Product Type:	Primary Antibodies
Clone Name:	1G1
Applications:	ELISA, FC, IHC, WB
Recommended Dilution:	<b>ELISA:</b> 1/10000. <b>Western Blot:</b> 1/500 - 1/2000. <b>Flow Cytometry:</b> 1/200 - 1/400. <b>Immunohistochemistry on Paraffin Sections:</b> 1/200 - 1/1000.
Reactivity:	Human
Host:	Mouse
Isotype:	IgG1
Clonality:	Monoclonal
Immunogen:	Purified recombinant fragment of Human CRP expressed in E. Coli.
Specificity:	Recognizes C-reactive protein (CRP)
Formulation:	State: Ascites State: Ascitic fluid containing 0.03% Sodium Azide.
Conjugation:	Unconjugated
Storage:	Store the antibody undiluted at 2-8°C for one month or (in aliquots) at -20°C for longer. Avoid repeated freezing and thawing.
Stability:	Shelf life: one year from despatch.
Predicted Protein Size:	25 kDa
Gene Name:	C-reactive protein, pentraxin-related
Database Link:	<a href="#">Entrez Gene 1401 Human P02741</a>
Background:	The protein encoded by this gene belongs to the pentaxin family. It is involved in several host defense related functions based on its ability to recognize foreign pathogens and damaged cells of the host and to initiate their elimination by interacting with humoral and cellular effector systems in the blood. Consequently, the level of this protein in plasma increases greatly during acute phase response to tissue injury, infection, or other inflammatory stimuli.



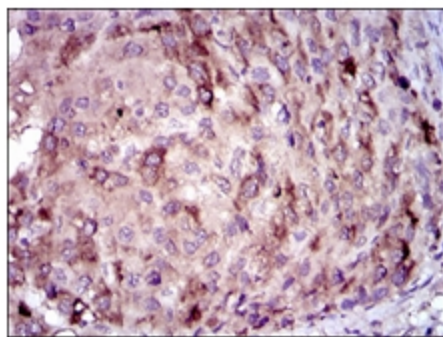
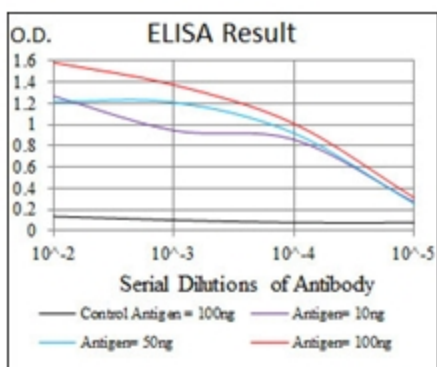
[View online »](#)

Synonyms: PTX1, C Reactive Protein, Pentraxin-related

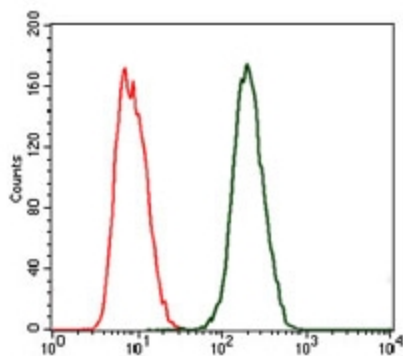
**Product images:**



Western blot analysis using CRP antibody Cat.-No AM06764SU-N against Human CRP recombinant protein. ( AA: 1-224, Expected MW is 51 kDa)



Immunohistochemical analysis of paraffin-embedded liver cancer tissues using CRP antibody Cat.-No AM06764SU-N with DAB staining.



Flow cytometric analysis of MCF-7 cells using CRP antibody Cat.-No AM06764SU-N (green) and negative control (red).