

## Product datasheet for **AM06760PU-N**

### **HSP90AA1 Mouse Monoclonal Antibody [Clone ID: 5G5]**

#### **Product data:**

Product Type:	Primary Antibodies
Clone Name:	5G5
Applications:	ELISA, FC, IHC, WB
Recommended Dilution:	<b>ELISA:</b> 1/10000. <b>Western Blot:</b> 1/500 - 1/2000. <b>Flow Cytometry:</b> 1/200 - 1/400. <b>Immunohistochemistry on Paraffin Sections:</b> 1/200 - 1/1000.
Reactivity:	Human, Monkey, Mouse
Host:	Mouse
Isotype:	IgG1
Clonality:	Monoclonal
Immunogen:	Purified recombinant fragment of Human HSP90AA1 expressed in E. Coli.
Specificity:	Recognizes HSP90AA1 / HSP90 alpha
Formulation:	PBS State: Purified State: Liquid purified antibody Stabilizer: 0.5% protein stabilizer Preservative: 0.05% Sodium Azide
Concentration:	lot specific
Conjugation:	Unconjugated
Storage:	Store the antibody undiluted at 2-8°C for one month or (in aliquots) at -20°C for longer. Avoid repeated freezing and thawing.
Stability:	Shelf life: one year from despatch.
Predicted Protein Size:	90 kDa
Gene Name:	heat shock protein 90kDa alpha family class A member 1
Database Link:	<a href="#">Entrez Gene 3320 Human P07900</a>



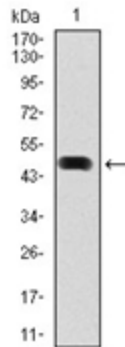
[View online »](#)

**Background:**

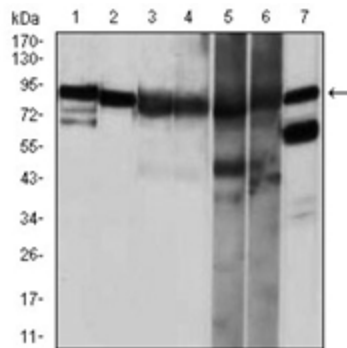
HSP90 proteins are highly conserved molecular chaperones that have key roles in signal transduction, protein folding, protein degradation, and morphologic evolution. HSP90 proteins normally associate with other cochaperones and play important roles in folding newly synthesized proteins or stabilizing and refolding denatured proteins after stress. There are 2 major cytosolic HSP90 proteins, HSP90AA1, an inducible form, and HSP90AB1 (MIM 140572), a constitutive form. Other HSP90 proteins are found in endoplasmic reticulum (HSP90B1; MIM 191175) and mitochondria (TRAP1; MIM 606219) (Chen et al., 2005 [PubMed 16269234]).

**Synonyms:**

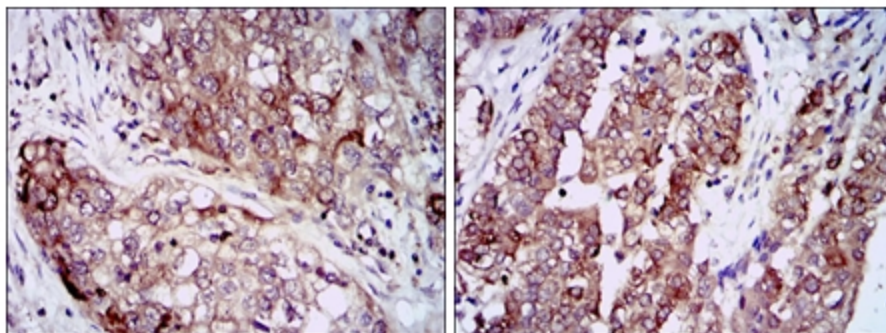
HSP90A, HSPC1, HSPCA, Heat shock 86 kDa, HSP86, NY-REN-38, Heat shock protein HSP 90-alpha

**Product images:**


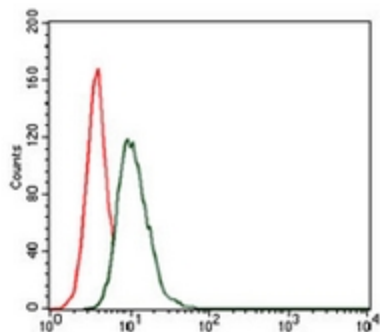
Western blot analysis using HSP90AA1 antibody against human HSP90AA1 (AA: 275-484) recombinant protein (Expected MW is 50.5 kDa)



Western blot analysis using HSP90AA1 antibody against NIH3T3 (1), HeLa (2), HCT116 (3), HL-60 (4), SK-Br-3 (5), C6 (6), and COS7 (7) cell lysate.



Immunohistochemical analysis of paraffin-embedded lung cancer (left) and bladder cancer (right) tissues using HSP90AA1 antibody with DAB staining.



Flow Cytometric analysis of HeLa cells using HSP90AA1 antibody (green) and negative control (red).