

Product datasheet for **AM06759SU-N**

CEBP Alpha (CEBPA) Mouse Monoclonal Antibody [Clone ID: 5B7]

Product data:

Product Type:	Primary Antibodies
Clone Name:	5B7
Applications:	ELISA, FC, IF, IHC, WB
Recommended Dilution:	ELISA: 1/10000. Western Blot: 1/500 - 1/2000. Flow Cytometry: 1/200 - 1/400. Immunofluorescence: 1/200 - 1/1000. Immunohistochemistry on Paraffin Sections: 1/200 - 1/1000.
Reactivity:	Human
Host:	Mouse
Isotype:	IgG1
Clonality:	Monoclonal
Immunogen:	Synthesized peptide of Human CEBPA
Specificity:	Recognizes CEBPA
Formulation:	State: Ascites State: Ascitic fluid containing 0.03% Sodium Azide.
Conjugation:	Unconjugated
Storage:	Store the antibody undiluted at 2-8°C for one month or (in aliquots) at -20°C for longer. Avoid repeated freezing and thawing.
Stability:	Shelf life: one year from despatch.
Predicted Protein Size:	42 kDa
Gene Name:	CCAAT/enhancer binding protein alpha
Database Link:	Entrez Gene 1050 Human P49715



[View online »](#)

Background:

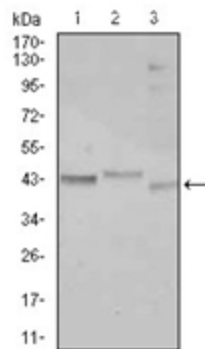
The protein encoded by this intronless gene is a bZIP transcription factor which can bind as a homodimer to certain promoters and enhancers. It can also form heterodimers with the related proteins CEBP-beta and CEBP-gamma. The encoded protein has been shown to bind to the promoter and modulate the expression of the gene encoding leptin, a protein that plays an important role in body weight homeostasis. Also, the encoded protein can interact with CDK2 and CDK4, thereby inhibiting these kinases and causing growth arrest in cultured cells.

Synonyms:

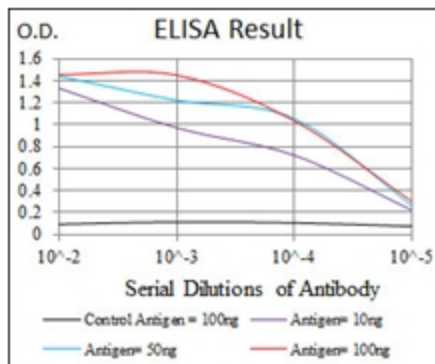
C/EBP alpha

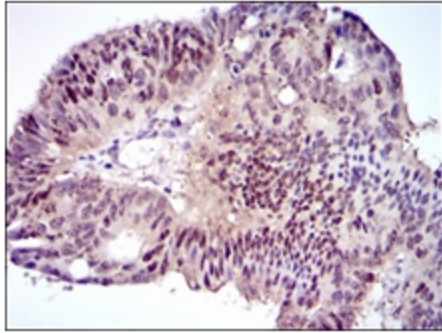
Note:
Tissue Array Results:

Stomach Cancer (+), Rectal Cancer (+), Rectum (+), Testis (+), Prostate Cancer (+), Lymphoid tissue (+).

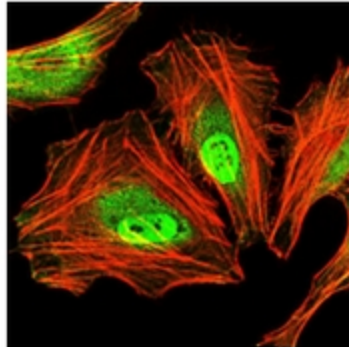
Product images:


Western blot analysis using CEBPA mouse mAb against Jurkat (1), k562 (2), and HepG2 (3) cell lysate.

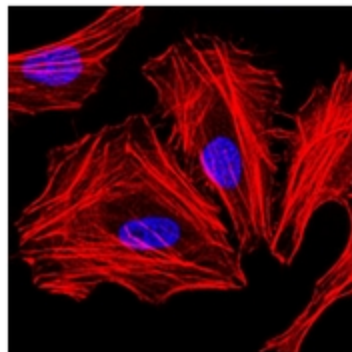




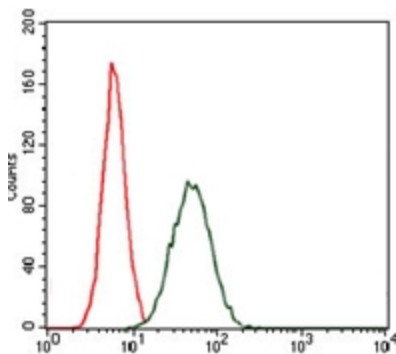
Immunohistochemical analysis of paraffin-embedded rectum tissues using CEBPA mouse mAb with DAB staining.



Immunofluorescence analysis of HeLa cells using CEBPA mouse mAb (green). Blue: DRAQ5 fluorescent DNA dye. Red: Actin filaments have been labeled with Alexa Fluor-555 phalloidin.



Immunofluorescence analysis of HeLa cells. Blue: DRAQ5 fluorescent DNA dye. Red: Actin filaments have been labeled with Alexa Fluor-555 phalloidin.



Flow cytometric analysis of MCF-7 cells using CEBPA mouse mAb (green) and negative control (red).